

RESEARCH

Open Access



New feed sources key to ambitious climate targets

Brian J. Walsh^{1*} , Felicjan Rydzak¹, Amanda Palazzo¹, Florian Kraxner¹, Mario Herrero², Peer M. Schenk³, Philippe Ciais⁴, Ivan A. Janssens⁵, Josep Peñuelas^{6,7}, Anneliese Niederl-Schmidinger¹ and Michael Obersteiner¹

Abstract

Net carbon sinks capable of avoiding dangerous perturbation of the climate system and preventing ocean acidification have been identified, but they are likely to be limited by resource constraints (Nature 463:747–756, 2010). Land scarcity already creates tension between food security and bioenergy production, and this competition is likely to intensify as populations and the effects of climate change expand. Despite research into microalgae as a next-generation energy source, the land-sparing consequences of alternative sources of livestock feed have been overlooked. Here we use the FeliX model to quantify emissions pathways when microalgae is used as a feedstock to free up to 2 billion hectares of land currently used for pasture and feed crops. Forest plantations established on these areas can conceivably meet 50 % of global primary energy demand, resulting in emissions mitigation from the energy and LULUC sectors of up to 544 ± 107 PgC by 2100. Further emissions reductions from carbon capture and sequestration (CCS) technology can reduce global atmospheric carbon concentrations close to preindustrial levels by the end of the present century. Though previously thought unattainable, carbon sinks and climate change mitigation of this magnitude are well within the bounds of technological feasibility.

Keywords: Protein, Livestock, Biofuels, Climate change, Food security, BECCS, CCS, FeliX

Background

Recent assessments from the Intergovernmental Panel on Climate Change (IPCC) conclude that net anthropogenic carbon emissions must be eliminated before the end of this century in order to limit increases in mean global surface temperatures to less than 2 °C [1, 2]. However, 1 PgC has been suggested as a floor for annual agricultural emissions, even if significant progress is made to close yield gaps [3]. In particular, livestock production currently accounts for roughly one fifth of total anthropogenic greenhouse gas emissions, a footprint which must be expected to grow as meat demand scales with the size and affluence of global populations [4, 5]. Given a dwindling global carbon budget, a carbon-negative energy sector stands out as an obvious target for offsetting sustained or growing emissions from other sectors.

Among carbon-sequestering technologies, photosynthesis is simultaneously the cheapest and most efficient known solution. Reductions in atmospheric CO₂ through increased biomass energy production coupled with carbon capture and underground storage (CCS) on a permanent or semi-permanent basis are theoretically possible and technologically foreseeable [6, 7]. However, large-scale biomass production for energy risks inflating food prices and land use change, creating a deep carbon debt which mitigates potential emissions benefits [8, 9]. Large-scale algaculture, an emerging technology, represents a potential source of biomass for energy production while avoiding these tradeoffs. More promisingly, however, microalgae can also be exploited as a source of animal feedstock, offsetting anticipated growth in demand for meat and dairy while allowing vast areas of agricultural land to be repurposed for biomass production or habitat restoration.

Algaculture

Phototrophic microalgae production systems can potentially generate enough biomass to satisfy a large fraction

*Correspondence: walsh@iiasa.ac.at

¹ Ecosystems Services and Management, International Institute for Applied Systems Analysis, Schlossplatz 1, Laxenburg, Austria
Full list of author information is available at the end of the article

of future global energy demand without shifting burdens onto forest or agricultural systems. In general, algacultural systems share several attractive characteristics which drive their effects on planetary boundaries. At present, productivities up to 100 dry biomass tons (tDM) $\text{ha}^{-1} \text{year}^{-1}$ are seen as feasible in the southern United States, and output in excess of 150 tDM $\text{ha}^{-1} \text{year}^{-1}$ has been achieved in closed production systems in climates as diverse as those of Benelux and the Maghreb [10, 11]. In the highest productivity systems, productivities are limited not by climactic conditions, but by carbon availability [11]. Microalgal strains and growing conditions can be selected or engineered to match varying climatic conditions and commodity demands, resulting in algal biomass highly enriched in proteins, carbohydrates, or lipids (typically 30 % and up to 60–75 % by dry weight), depending on its use [12].

Algacultural production systems can be constructed on degraded or otherwise unproductive land unsuitable for conventional feedstocks [13], mitigating competition for arable land as well as tradeoffs between bioenergy production and food security. Many strains grow in brackish or seawater, and freshwater can be recycled through many harvests, thus minimizing the impact of production systems on fresh water use [12, 14]. Nitrogen and phosphorous, both essential inputs, can be supplied partially with wastewater and excess manure stocks, thus closing crucial fertilizer cycles [13]. Finally, CO_2 can be supplied from flue gases or drawn directly from the atmosphere in open systems, making algae a nearly carbon-neutral commodity [12].

Protein-rich biomass is in all cases a co-product and in some cases the main product of these systems. As feedstock, studies have shown a range of species of eukaryotic microalgae to be equal or superior to conventional sources of carbohydrates and proteins in terms of nutritional value and digestibility [15, 16]. Net protein utilization, a compound measure of the digestibility and biological value of the protein contained in foods, varies from 20–40 %, and is on par with conventional sources [17]. Relative to conventional feeds, field studies have established neutral-to-positive effects on feed palatability, overall livestock growth and mortality rates, and meat taste for diets containing up to 10, 33, and 45 % microalgae for poultry, pigs, and ruminants, respectively [16, 18, 19]. As a result, microalgae represents a potential replacement for soy, fishmeal, and other conventional sources of protein. Pilot microalgae production systems have already been established (e.g. the Algae Energy Farm (AEF) in Queensland, Australia and the Kona Demonstration Facility in Hawaii), indicating that algal biomass for feed and fuel may soon become a commercial reality [20].

Scenario definitions

We use the Felix model to assess the emissions and land use consequences of maximal land-based biomass production for energy [21, 22]. In the business-as-usual (BAU) scenario, future global population growth, dietary patterns, energy profiles, and agricultural yields are assumed to develop along historical trends and without perturbation from policy changes or transformational technologies. In the *BioEnergy* scenario, the expansion of biomass, wind, and solar energy is accelerated exogenously to match more aggressive climate action scenarios [23], simulating an accelerated transition to renewable energies. Together, these scenarios define a baseline against which the impacts of alternative technologies can be measured. The construction and calibration of the BAU scenario are presented and discussed in depth in this paper's SI and on the model website [21].

Relative to this baseline, we assess the maximum theoretical emissions mitigation potential of microalgae alternately as a source of biomass for energy (*Alg-Fuel*) and as a feedstock (*Alg-Feed*). In these scenarios, we impose exogenously the construction of 25–50 Mha of algaculture at a constant rate between 2015 and 2060. The output of these systems (up to 75 tDM $\text{ha}^{-1} \text{year}^{-1}$) generates an annual total of up to 3.75 Gt DM [10]. On-shore microalgae production systems are assumed to occupy non-arable or permanently fallow land and to use recycled fresh or brackish water. Essential nutrients are supplied from municipal wastewater, agricultural runoff, or manure. Algae can be near carbon-neutral (modulo production and transportation costs), as CO_2 is sourced initially from flue gases from the combustion of fossil fuels and subsequently from bioenergy production. Other potential sources include steel and cement manufacturing facilities, small industries, agriculture, and open-air respiration [11]. To minimize the infrastructure, transportation, and emissions costs, proximity to essential inputs should be a primary consideration in the construction of algae farms [11, 13].

In the *Alg-Fuel* scenario, algacultural output is burned directly for electricity or used to produce biodiesel. In the *Alg-Feed* scenario, this output is instead used to meet 40 % of global demand for feed. Extrapolating from FAO feed demand estimates and assuming conventional plant-to-animal conversion efficiencies, the maximum required annual output (40 % of feed) ranges from 0.5 GtDM in 2010 to 1.0 GtDM in 2100 [24]. Thus, this scenario requires up to 25 Mha, allowing for a 50 % reduction in areal productivity (32.5 tDM $\text{ha}^{-1} \text{year}^{-1}$) due to feed quality standards.

In all scenarios, biomass for bioenergy is sourced from the conversion of natural forests to plantations (10 tDM $\text{ha}^{-1} \text{year}^{-1}$) or the use of agricultural land for energy

crops (20 tDM ha⁻¹ year⁻¹) [25]. In all scenarios except *BAU*, agricultural residues from half of arable land are also collected for fuel (5.5 tDM ha⁻¹ year⁻¹). Areal yields consistent with highly-productive energy crops on prime agricultural land are applied irrespective of regional or climatic considerations in order to establish an upper bound on the impact of agricultural bioenergy production (cf. Table 1).

Each of these bioenergy production scenarios is evaluated over a range of energy sector emissions mitigation with CCS (25–75 %) reduction on emissions from the energy sector) to identify the CCS threshold at which each energy mix achieves net-zero anthropogenic emissions.

Leading systematic errors are determined from additional scenarios in which major model parameters are varied independently within an envelope of plausibility. We subsequently assess the impact of each parameter on emissions and warming projections. Many systematic errors in model results are correlated over all scenarios, and leading uncorrelated errors are quantified (Table 2), resulting in a robust assessment of scenario impacts relative to *BAU*.

Results

Demographics in the FeliX model are calibrated to leading exogenous projections. Global population is projected to reach 10.5 billion—a nearly 50 % increase—by 2100 [26], while global GDP per capita is projected to increase fivefold over the same period [27]. This growth leads to increases in per capita demand for energy (+25 %) and vegetal (+20 %) and animal (+40 %) food calories, all of which pose significant, well-documented challenges for global human and natural systems [3]. Within this context, the potential consequences of algaculture for fuel and feed can be evaluated in terms of associated land use changes and carbon emissions pathways.

Energy profile and supply

Figure 1 displays the time series of primary energy production for the *BAU*, *BioEnergy*, *Alg-Fuel*, and *Alg-Feed*

Table 1 Biomass streams for bioenergy production in the four main scenarios in this analysis

Bioenergy source (yield [tDM ha ⁻¹ year ⁻¹])	Scenario				Ref.
	<i>BAU</i>	<i>BioEnergy</i>	<i>Alg-Fuel</i>	<i>Alg-feed</i>	
Forest plantations (10)	✓	✓	✓	✓	[25]
Energy crops (20)	✓	✓	✓	✓	[25]
Agricultural residues (5.5)		✓	✓	✓	[33]
Microalgae (<i>as fuel</i> 75)			✓		[11]

In the *Alg-Feed* scenario, algal biomass is used as feedstock, not for energy production. Biomass from all sources is assumed to generate energy (17.45 GJ tDM⁻¹) and net emissions (0.049 tC tDM⁻¹, excluding land use change) uniformly

Table 2 Dependence of cumulative (2011–2100) energy and land use sector emissions projections on critical model parameters

Cumulative emissions (2011–2100)		
Nominal $ \Delta(\text{Alg-Feed}, \text{BAU}) = 544 \pm 107 \text{ PgC}$		
Parameter shift	Down (Rel.)	Up (Rel.)
Agricultural emissions	539 (−0.9 %)	550 (1.0 %)
Agricultural residues	521 (−4.2 %)	565 (3.8 %)
Agricultural yields	540 (−2.6 %)	543 (−0.3 %)
Algae program start	–	494 (−9.2 %)
Biomass fixed emissions	602 (10.6 %)	487 (−10.5 %)
Energy crop productivity	572 (5.1 %)	538 (−1.2 %)
Energy demand	516 (−5.1 %)	569 (4.5 %)
Feed Pct. from algae	453 (−16.8 %)	–
Food demand (Ani.)	547 (0.5 %)	541 (−0.6 %)
Food demand (Veg.)	540 (−0.8 %)	548 (0.8 %)
Forest C sequestration	517 (−5.0 %)	571 (5.0 %)
Global GDP	537 (−1.2 %)	549 (0.9 %)
Non-CO ₂ emissions	544 (0.0 %)	544 (0.0 %)
Plantation productivity	507 (−6.8 %)	578 (6.3 %)
World population	530 (−2.5 %)	554 (1.9 %)
Total error (uncorrelated, symmetrized): ±19.6 %		

Cumulative emissions from the energy and land use sectors in the *BAU* and *Alg-Feed* scenarios are recalculated with each model parameter shifted independently as discussed in the SI. Emissions abatement for *Alg-Feed* relative to *BAU* is reported in absolute terms and as a percentage of the nominal value (544 PgC). Positive percentages indicate greater *Alg-Feed* scenario impact relative to *BAU* (additional climate mitigation), and negative values indicate diminished impact. Nominal parameters values and shift magnitudes are defined in this paper's SI. All errors are assumed to be uncorrelated and summed quadratically in the bottom row

scenarios. Primary energy production in the *BAU* and *BioEnergy* scenarios is calibrated to baseline and aggressive climate action estimates, respectively, from comprehensive analyses [7, 23]. As such, these are not model results, but rather define the scenarios and represent benchmarks to frame discussion of the benefits and costs associated with each approach to energy production. Overall, the market share of fossil fuels falls from 95 % at the beginning of the century to 60 % in *BAU* and nearly 40 % in the *BioEnergy* scenario. These scenarios delimit a range of energy futures consistent with the GEA and fall between RCPs 4.5 and 6.0 [23, 28].

In the *Alg-Fuel* scenario, the projected annual output of 50 Mha of algaculture generates 65 EJ year⁻¹ (Fig. 1c), primarily offsetting oil consumption. If algal biomass is instead used as feed (*Alg-Feed*), agro-biomass production expands to 446 EJ year⁻¹ (Fig. 1d), 90 % of which is due to the productivity of former pasture and feed-crop land. This eliminates all dependence on oil and offsets demand for coal and gas, reducing fossil fuel consumption to under 20 % of primary energy supply.

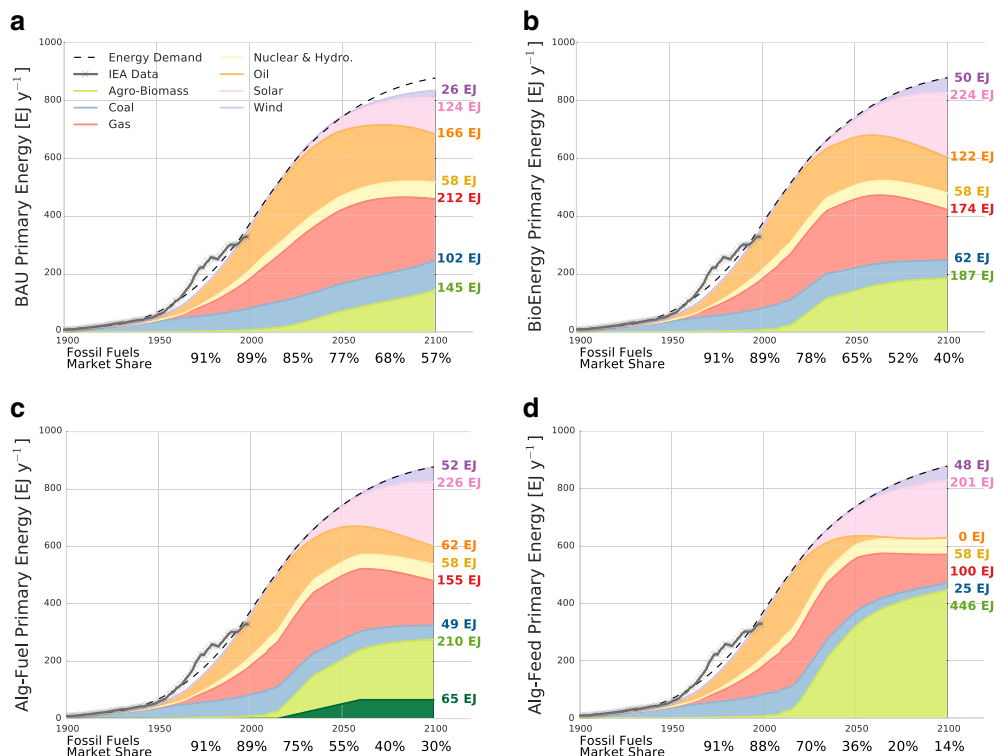


Fig. 1 Total annual primary energy production [EJ] through 2100 in the **a** BAU, **b** BioEnergy, **c** Alg-Fuel, and **d** Alg-Feed scenarios. Grey and black curves indicate historical data and projected demand, respectively. Colored numbers on the right display the primary supply of each energy source in EJ. Historical data from IEA used for calibration [39]

Land use change

In the Felix model as in leading estimates, population and GDP growth combine to generate an 80 % increase in total calorie demand by 2100 [3]. This rate of growth in agricultural demand outpaces yield growth projections [29], driving expansion of arable land and permanent pastures and meadows by midcentury (Fig. 2) and increasing land use change emissions. Given this growth, agriculture for food and—increasingly—feed is likely to take up the most productive arable land, limiting the feasibility of large-scale first- and second-generation biofuel production on prime agricultural land [30]. Agricultural residues generate up to 50 EJ year⁻¹ in the BioEnergy scenario, less than a quarter of anticipated bioenergy demand.

Concurrent with agricultural expansion, the land needed to meet anticipated bioenergy demand grows to over 800 Mha in the BAU, BioEnergy, and Alg-Fuel scenarios. This must be expected to exacerbate competition for arable land, driving up food and energy prices and resulting in deforestation as biomass plantations replace natural and lightly-managed forests [30, 31].

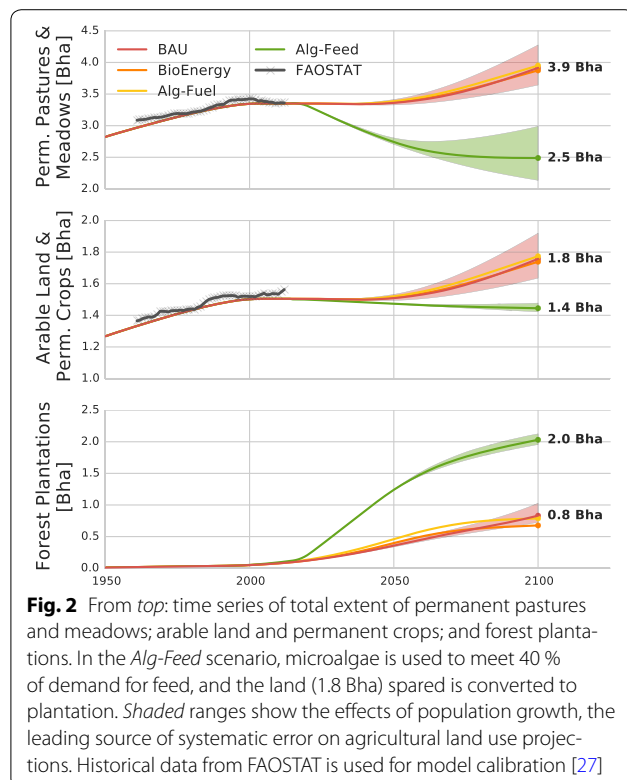
Algae culture avoids such tradeoffs, simultaneously satisfying growing demand for animal products and biomass.

Used as feed, microalgal biomass can free up to 40 % of pastures, meadows, and feedcrop land. This area—2.0 Bha in 2100 in the BAU scenario—is sufficient to produce annual biomass harvests equivalent to over 355 EJ. In this way, highly-productive algacultural technologies can be harnessed to offset the resource and environmental costs of rising demand for animal proteins.

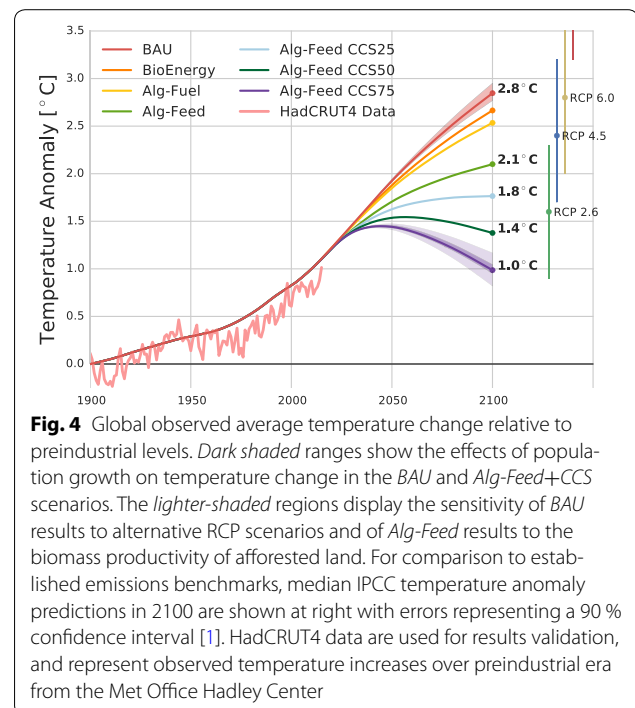
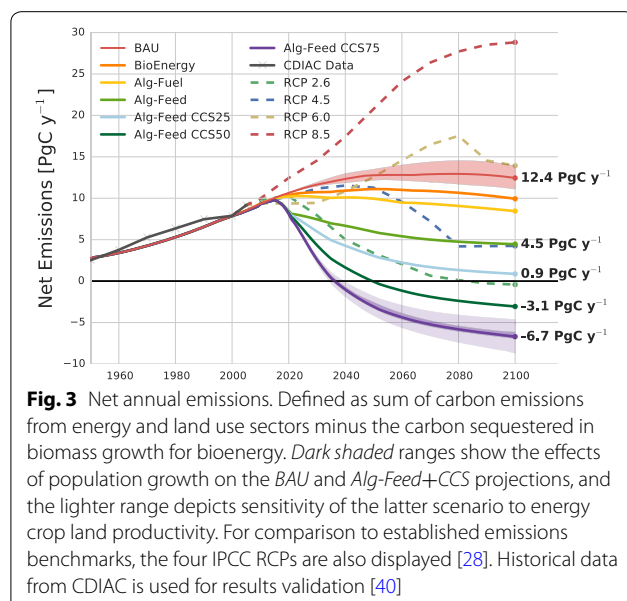
Emissions

In the BAU scenario, annual emissions from the energy and land use sectors increase by 30 % between 2010 and 2100 despite growth in the total market share of renewable energies. This emissions pathway results in monotonically-increasing atmospheric CO₂ concentrations and a rise in global temperatures nearing 3 °C above preindustrial levels by 2100 (Figs. 3 and 4). Marginal increases in biofuel production in the BioEnergy and Alg-Fuel scenarios do reduce carbon emissions, but do not represent the kind of transformation required to avoid 2 °C warming—in part, because they do not reduce (and may increase) emissions from land use change.

More promisingly, significant expansion of renewable energies combines with avoided land use change emissions in the Alg-Feed scenario to achieve an emissions



pathway between RCPs 2.6 and 4.5 [28]. Even before additional potential emissions benefits from CCS, this strategy is expected to reduce global temperature change 0.7°C relative to *BAU* by 2100. Figures 3 and 4 project potential emissions and climate mitigation in the *Alg-Feed* scenario from the superposition of CCS (25, 50, or



75 % energy sector emissions reduction). With the addition of this technology, net zero emissions are achieved when at least 25 % of emissions from the energy sector are sequestered. Higher capture rates transform the energy and land use sectors into a net carbon sinks. The dependence of total emissions abatement in the *Alg-Feed* scenario (relative to *BAU*) on essential model parameters and other scenario-specific assumptions is listed in Table 2.

Though we have concentrated to this point on maximizing the emissions impact of algal feedstock by offsetting as much feed demand as possible, projected atmospheric carbon concentrations in year 2100 are shown for a range of algal contributions to animal feed (10–40 %) and energy sector emissions mitigation due to CCS (0–75 %) in Table 3. Yellow cells fall on the threshold for global surface warming ($2.0 \pm 0.2^{\circ}\text{C}$). Green cells indicate sub- 2°C warming in year 2100 of the simulation, and red cells indicate supra- 2°C change.

Microalgal feedstock does not need to be maximized in order to contribute to the decarbonization of the energy and land use sectors. On any scale, algaculture creates the possibility of freeing large areas of arable land for biomass production. While the magnitude of the resulting carbon sink varies, microalgal feedstock holds significantly more promise than marginal improvements including conventional methods of agricultural intensification and algal biofuels, and is much closer to reality than other potentially transformational alternatives. For

Table 3 Projected atmospheric CO₂ concentrations [ppm] in year 2100 of the simulation

	CCS Energy Sector Emissions Mitigation							
	0%	25%	35%	45%	55%	65%	75%	
BAU	624	563	537	514	491	470	445	
BioEnergy	583	525	500	478	456	436	413	
Alg-Feed 10%	513	458	435	415	395	376	355	
Alg-Feed 20%	496	442	418	398	378	359	337	
Alg-Feed 30%	484	429	405	385	364	345	323	
Alg-Feed 40%	473	417	393	372	351	332	310	

A range of energy sector emissions mitigation from CCS (at top) are applied to a range of algae production scenarios (listed at left as percentages of total feed consumption). Yellow shaded cells indicate warming of 2.0 ± 0.2 °C. Red shaded cells indicate warming projections in excess of this threshold, while green shaded cells indicate sub-1.8 °C warming

these reasons, algaculture and the land use optimization it enables should be seriously considered as essential tools for climate mitigation up to and including a decline in atmospheric carbon concentrations to preindustrial levels before the end of the century.

Discussion and conclusions

The *BAU* scenario in this analysis forecasts increasing carbonization and warming of the atmosphere and oceans. This results in climate change, which will magnify demographic pressures on food and water security as well as forests and other ecosystems and functional biodiversity. In many ways, however, this baseline assumes the possibility of carrying on with business-as-usual through the end of the present century. Most importantly, it is possible that depletion of cheap fossil fuel reserves or growing appreciation of the threat posed by climate change will lead to greater-than-forecast demand for biomass. In the closed land system, failure to prepare for this transition will exacerbate competition for arable land, degrade food security, and accelerate deforestation and biodiversity loss.

In terms of emissions and temperature change, the *BioEnergy* and *Alg-Fuel* scenarios do not differ significantly from *BAU*. Ultimately, land scarcity precludes the possibility of establishing plantations and energy crops to produce enough biomass to substitute for a significant fraction of fossil fuel consumption [30, 32]. This leaves CCS (on scales that have not yet been proven feasible) or other so far unidentified technologies as alternatives for rapid, urgent emissions mitigation. Further, although the agricultural and plantation yields assumed in this analysis are conservative, harvesting of tree crowns and agricultural residues can deplete topsoils of vital nutrients, increasing dependence on fertilizers. In addition, an increase in demand for land-based biomass such as is foreseen in *BioEnergy* scenarios carries several hidden costs. In addition to land use change consequences, risks include disruption of ecosystems services including soil carbon sinks, biodiversity, and water

cycles [7, 33, 34]. The direct and indirect costs of bioenergy production must be weighed against the benefits of this approach.

On the other hand, we have demonstrated the theoretical and technological potential of microalgal feedstock to relieve land scarcity, allowing arable land to be leveraged to produce cleaner energy while addressing the threats of climate change, deforestation, eutrophication, and food and water scarcity. In recognition of the fact that these systems can be engineered to produce biomass without generating a commensurate burden on critical ecosystems cycles and services, algacultural systems have already been established at some experimental farms to overcome biomass shortages in dry seasons.

The AEF currently produces algal biomass for feed at a cost of \$1,840 per dry ton (cf. Additional file 1: Table S2). Prices as low as \$500 per dry ton are generally seen as feasible, but only if CO₂ (57 % of AEF costs) can be sourced at no expense. At these prices, algae could have supplied 40 % of global feedstock in 2013 at a cost of 250–920 billion US\$(2013). As a comparison, the global gross production value of livestock in the same year was 1,262 billion US\$(2013), and fossil fuel subsidies totaled 550 billion US\$(2013) [27, 35]. This estimate does not account for the value of algal co-products, nor does it include the land value created by the transformation of low-productivity pastures into plantations.

Algal biomass is already a viable alternative to fishmeal (\$1,880 ton⁻¹) and should eventually compete with soymeal (average \$375 ton⁻¹ over the last year) [36]. Critically, growth in demand for conventional protein sources has driven up the prices of both commodities (soy: 88 %, fishmeal: 165 % over the last decade), and this long-term trend can be expected to continue. On the other hand, research and investment in algacultural pilot programs will lead to higher productivities and lower costs for the cultivation, harvesting, and processing of algae at industrial scales. Looking forward, microalgae production systems represent an ideal transition technology from fossil fuels to bioenergy. For governments looking for shortcuts to sustainable development, algal feedstock manages to satisfy the competing imperatives of food security and climate mitigation by reducing resource burdens while commodifying CO₂. On large scales, this establishes the conditions for cascading greenhouse emissions savings and a return to preindustrial atmospheric carbon concentrations.

To be sure, there exist a number of challenges to engineering and operating algacultural systems on the scale envisioned in this analysis. Systems must be engineered which are robust against contaminant or mutant strains of algae, zooplankton, and viruses and other pathogens, which represent threats to stable and highly-productive monocultural systems [20]. As potential sites for

colocation with carbon sources are exhausted, carbon capture and transportation infrastructures will need to be expanded at the same rate as algal production systems in order to maintain high productivities and low costs. Large scale carbon capture for algae production and permanent sequestration will likely increase energy consumption and costs, as will energy-intensive methods of algal biomass processing. For freshwater systems as well as those that fertilize with wastewater, the feasibility of recycling water through successive harvests in open and closed systems must be studied. Finally, the supply of nutrients to large scale algae production would necessitate an international market for manure and other forms or recycled nutrients from animal and human sources. Additional research should also be done to match leakage points in global nitrogen and phosphorous cycles with algal production systems, thereby minimizing the nutrient loads of these systems as well as the deleterious effects of agricultural runoff.

Apart from obstacles to large scale algae production, biodiversity loss—already a problem in the *BAU* and *Bio-Energy* scenarios—would likely be exacerbated by even greater conversion of pasture and rangeland to energy crop plantations [37]. The elimination of pasture will require higher livestock densities, though rotational grazing in silvopastoral systems can mitigate animal crowding while fertilizing plantations, and the replacement of low quality feedstocks with algae may reduce reliance on antibiotics. Finally, afforestation and reforestation on the scale envisioned here would lower terrestrial albedo in these areas, potentially blunting the cooling impact of greater carbon sequestration [38]. Despite these unresolved questions, this analysis demonstrates that algal feedstock at any scale represents a promising and simultaneous solution to food security and climate change, and that these systems merit greater attention and closer scrutiny than they have thus far received.

Additional file

Additional file 1 The supplementary information for this paper contains descriptions of the Felix model and the *BAU* scenario as well as a discussion of the model parameters shifted in the error analysis.

Abbreviations

AEF: Algae Energy Farm at the University of Queensland in Queensland, Australia; BAU: business as usual; CCS: carbon capture and sequestration; IPCC: Intergovernmental Panel on Climate Change; tDM: metric ton dry biomass.

Authors' contributions

BW and FR established the structure and scope of the Felix model. AS and MO generated the foundational ideal for the analysis. BW, MO, FR, and MH defined and developed the scenarios presented. BW and AP contributed to literature review and projections (RCPs, SSPs, and agricultural yields). PS, MH, and AS consulted on algal culture cost, productivity, and other technical parameters. BW, FR, MO, PS, AP, MH, IJ, PC, AS, JP, PH, and FK contributed to the preparation

and validation of all scenarios, consulted on the scope of the analysis, and edited the manuscript. All authors read and approved the final manuscript.

Author details

¹ Ecosystems Services and Management, International Institute for Applied Systems Analysis, Schlossplatz 1, Laxenburg, Austria. ² Commonwealth Scientific and Industrial Research Organisation, Brisbane, Australia. ³ Algae Biotechnology Laboratory, School of Agriculture and Food Sciences, The University of Queensland, Brisbane, Australia. ⁴ Laboratoire des Sciences du Climat et de l'Environnement, CEA-CNRS-UVSQ, Gif-sur-Yvette, France. ⁵ University of Antwerp, Wilrijk, Belgium. ⁶ CSIC, Global Ecology Unit CREAL-CSIC-UAB, Cerdanyola del Valles (Catalonia), Spain. ⁷ CREAL, Cerdanyola del Valles (Catalonia), Spain.

Acknowledgements

The authors acknowledge support from the European Research Council Synergy grant ERC-2013-SyG-610028 IMBALANCE-P. Felix is a model that has been developed and applied in a team effort at IIASA over the course of several years and projects, led originally by ESM staff member Dr. Felicjan Rydzak, and with significant foundational contributions from ESM staff members Dr. Michael Obersteiner, Florian Kraxner, Dr. Steffen Fritz, and Dr. Ian McCallum.

Competing interests

The authors declare that they have no competing interests.

Received: 23 October 2015 Accepted: 27 November 2015

Published online: 01 December 2015

References

- Moss RH, et al. The next generation of scenarios for climate change research and assessment. *Nature*. 2010;463:747–56.
- Edenhofer O, Pichs-Madruga R, Sokona Y, Farahani E, Kadner S, Seyboth K, Adler A, Baum I, Brunner S, Eickemeier P, et al. Climate change, mitigation of climate change. Contribution of Working Group III to the Fifth Assessment Report of the Intergovernmental Panel on Climate Change. 2014;511–97.
- Tilman D, Balzer C, Hill J, Befort BL. Global food demand and the sustainable intensification of agriculture. *Proc Natl Acad Sci USA*. 2011;108(50):20260–4.
- Eshel G, Shepon A, Makov T, Milo R. Land, irrigation water, greenhouse gas, and reactive nitrogen burdens of meat, eggs, and dairy production in the United States. *Proc Natl Acad Sci*. 2014;111(33):11996–2001.
- Smith P, Martino D, Cai Z, Gwary D, Janzen H, Kumar P, McCarl B, Ogle S, O'Mara F, Rice C, et al. Greenhouse gas mitigation in agriculture. *Philos Trans R Soc B Biol Sci*. 2008;363(1492):789–813.
- Rose SK, Kriegler E, Bibas R, Calvin K, Popp A, van Vuuren DP, Weyant J. Bioenergy in energy transformation and climate management. *Clim Change*. 2014;123(3–4):477–93.
- Beringer T, Lucht W, Schapoff S. Bioenergy production potential of global biomass plantations under environmental and agricultural constraints. *GCB Bioenerg*. 2011;3:299–312.
- Creutzig F. Economic and ecological views on climate change mitigation with bioenergy and negative emissions. *GCB Bioenerg*. 2014. doi:10.1111/gcbb.12235.
- Fargione J, Hill J, Tilman D, Polasky S, Hawthorne P. Land clearing and the biofuel carbon debt. *Science*. 2008;319(5867):1235–8.
- Orfield ND, Keoleian GA, Love NG. A GIS based national assessment of algal bio-oil production potential through flue gas and wastewater co-utilization. *Biomass Bioenerg*. 2014;63:76–85.
- Slegers PM, Leduc S, Wijffels RH, van Straten G, van Bostel AJB. Logistic analysis of algae cultivation. *Bioresour Technol*. 2015;179:314–22.
- Cheng JJ, Timilsina GR. Status and barriers of advanced biofuel technologies: a review. *Renew Energy*. 2011;36(12):3541–9.
- Clarens AF, Resurreccion EP, White MA, Colosi LM. Environmental life cycle comparison of algae to other bioenergy feedstocks. *Environ Sci Technol*. 2010;44(5):1813–9.
- Duong VT, Ahmed F, Thomas-Hall SR, Quigley S, Nowak E, Schenk PM. High protein- and high lipid-producing microalgae from northern

- australia as potential feedstock for animal feed and biodiesel. *Front Bioeng Biotechnol.* 2015;3:53.
15. Becker EW. Micro-algae as a source of protein. *Biotechnol Adv.* 2007;100(1):178–81.
 16. Van Emon ML, Loy DD, Hansen SL. Determining the preference, in vitro digestibility, in situ disappearance, and grower period performance of steers fed a novel algae meal derived from heterotrophic microalgae. *J Anim Sci.* 2015;93:3121–9.
 17. Belay A, Kato T, Ota Y. *Spirulina* (arthrospira): potential application as an animal feed supplement. *J Appl Phycol.* 1996;8:303–11.
 18. Spolaore P, Joannis-Cassan C, Duran E, Isambert A. Commercial applications of microalgae. *J Biosci Bioeng.* 2006;101(2):87–96.
 19. Becker W. Microalgae in human and animal nutrition. In: Richmond A, editor. *Handbook of microalgal culture: biotechnology and applied phyecology.* Oxford: Blackwell; 2004. p. 312–51.
 20. Huntley ME, Johnson ZI, Brown SL, Sills DL, Gerber L, Archibald I, Machesky SC, Granados J, Beal C, Greene CH. Demonstrated large-scale production of marine microalgae for fuels and feed. *Algal Res.* 2015;10:249–65.
 21. Walsh, B. The Felix Model. 2015. <http://www.felixmodel.org>. Accessed 10 Oct 2015.
 22. Rydzak F, Obersteiner M, Kraxner F, Fritz S, McCallum I. Felix3—Impact Assessment Model. Technical report, International Institute for Applied Systems Analysis (2013). Available for download at <http://www.felix-model.com>.
 23. Global Energy Assessment Toward a sustainable future. Technical report, IIASA, Laxenburg(2012)
 24. Speedy AW. Overview of world feed protein needs and supply. Food and Agriculture Organization of the United Nations (FAO), Rome (2004) pp. 9–27.
 25. Wise M, Dooley J, Luckow P, Calvin K, Kyle P. Agriculture, land use, energy and carbon emission impacts of global biofuel mandates to mid-century. *Appl Energy.* 2014;114:763–73.
 26. Gerland P, et al. World population stabilization unlikely this century. *Science.* 2014;346(6206):234–7.
 27. FAOSTAT Database. Food and Agriculture Organization of the United Nations, Rome 2015. <http://faostat3.fao.org>. Accessed 18 Oct 2015.
 28. Vuuren DP, et al. The representative concentration pathways: an overview. *Clim Change.* 2011;109:5–31.
 29. Herrero M, Havlik P, McIntire J, Palazzo A, Valin H. African livestock futures: realizing the potential of livestock for food security, poverty reduction and the environment in Sub-Saharan Africa (2014).
 30. Smith P, Gregory PJ, Van Vuuren D, Obersteiner M, Havlik P, Rounsevell M, Woods J, Stehfest E, Bellarby J. Competition for land. *Philos Trans R Soc B Biol Sci.* 2010;365(1554):2941–57.
 31. Gibbs HK, et al. Tropical forests were the primary sources of new agricultural land in the 1980s and 1990s. *Proc Natl Acad Sci USA* 2010; 107:16732–7.
 32. Fuss S, et al. Betting on negative emissions. *Nat Clim Change.* 2014;4:850–3.
 33. Liska AJ, et al. Biofuels from crop residue can reduce soil carbon and increase CO₂ emissions. *Nat Clim Change.* 2014;4(5):398–401.
 34. Schulze E-D, Körner C, Law BE, Haberl H, Luysaert S. Large-scale bioenergy from additional harvest of forest biomass is neither sustainable nor greenhouse gas neutral. *GCB Bioenergy.* 2012;4(6):611–6.
 35. World Energy Outlook Fossil Fuel Subsidy Database. International Energy Agency, Paris. 2014. <http://www.worldenergyoutlook.org/resources/energy-subsidies/fossil-fuel-subsidy-database/>. Accessed 22 Oct 2015.
 36. Commodity Price Data. The World Bank Group, Washington, DC. 2015. <http://data.worldbank.org/data-catalog/commodity-price-data>. Accessed 20 Oct 2015.
 37. Newbold T, Hudson LN, Hill SL, Contu S, Lysenko I, Senior RA, Börger L, Bennett DJ, Choimes A, Collen B, et al. Global effects of land use on local terrestrial biodiversity. *Nature.* 2015;520(7545):45–50.
 38. Bathiany S, Claussen M, Brovkin V, Raddatz T, Gayler V. Combined biogeophysical and biogeochemical effects of large-scale forest cover changes in the MPI earth system model. *Biogeosciences.* 2010;7(5):1383–99.
 39. Key World Energy Statistics 2013. International Energy Agency, Paris. 2013. <http://www.iea.org>. Accessed 1 Oct 2015.
 40. Boden TA, et al. Global, regional, and national fossil-fuel CO₂ emissions. Technical report, Carbon Dioxide Information Analysis Center, Oak Ridge National Laboratory, U.S. Department of Energy (2013)

Submit your manuscript to a SpringerOpen[®] journal and benefit from:

- Convenient online submission
- Rigorous peer review
- Immediate publication on acceptance
- Open access: articles freely available online
- High visibility within the field
- Retaining the copyright to your article

Submit your next manuscript at ► springeropen.com
