

RESEARCH

Open Access



# Responses of forest carbon and water coupling to thinning treatments from leaf to stand scales in a young montane pine forest

Yi Wang<sup>1,2</sup>, Antonio D. del Campo<sup>3</sup>, Xiaohua Wei<sup>1\*</sup> , Rita Winkler<sup>4</sup>, Wanyi Liu<sup>1</sup> and Qiang Li<sup>1</sup>

## Abstract

**Background:** Water-use efficiency (WUE) represents the coupling of forest carbon and water. Little is known about the responses of WUE to thinning at multiple spatial scales. The objective of this research was to use field measurements to understand short-term effects of two thinning treatments (T1: 4500 stems ha<sup>-1</sup>; and T2: 1100 stems ha<sup>-1</sup>) and the control (NT: 27,000 stems ha<sup>-1</sup>) on WUE at the three spatial scales (leaf level: the ratio of leaf photosynthesis to leaf transpiration; tree-level: tree growth to tree transpiration; and stand level: net primary production (NPP) to stand transpiration) and intrinsic WUEi (the ratio of leaf photosynthesis to stomatal conductance at leaf-level; and NPP to canopy conductance at stand-level) in a 16-year old natural lodgepole pine forest. Leaf-level measurements were conducted in 2017, while tree- and stand-level measurements were conducted in both 2016 (the normal precipitation year) and 2017 (the drought year).

**Results:** The thinning treatments did not significantly affect the tree- and stand-level WUE in the normal year of 2016. However, the thinning significantly affected WUE in the drought year of 2017: T2 exhibited significantly higher tree-level WUE (0.49 mm<sup>2</sup> kg<sup>-1</sup>) than NT (0.08 mm<sup>2</sup> kg<sup>-1</sup>), and compared to NT, the stand-level WUE values in the thinned stands (T1 and T2) were significantly higher, with means of 0.31, 0.56 and 0.70 kg m<sup>-3</sup>, respectively. However, the leaf-level and stand-level WUEi in the thinned stands in the drought year were significantly lower than those in the unthinned stands. No significant differences in the leaf-level WUE were found among the treatments in 2017. In addition, the thinning did not significantly change the WUE-VPD relationships at any studied spatial scale.

**Conclusions:** The thinning treatments did not cause significant changes in all studied WUE metrics in a normal year. However, their effects were significantly promoted under the drought conditions probably due to the decrease in soil water availability, demonstrating that thinning can improve WUE and consequently support forests to cope with the drought effects. The inconsistent results on the effects of the thinning on forest carbon and water coupling at the spatial scales and the lack of the consistent WUE metrics constraint across-scale comparison and transferring of WUE.

**Keywords:** Water-use efficiency (WUE), Thinning treatments, Spatial scales, *Pinus contorta*, Gas exchange, Drought

## Background

Water-use efficiency (WUE), representing the coupling between carbon assimilation and water consumption of vegetation, is an important parameter in modelling responses of terrestrial carbon and water cycles to climate and land cover changes [45, 65, 94, 107, 108]. At the leaf level, water-use efficiency (leaf-level WUE) is calculated as the ratio of net photosynthetic assimilation to

\*Correspondence: adam.wei@ubc.ca

<sup>1</sup> Department of Earth, Environmental and Geographic Sciences, University of British Columbia, Okanagan, 1177 Research Road, Kelowna, BC V1V 1V7, Canada

Full list of author information is available at the end of the article



© The Author(s) 2020. This article is licensed under a Creative Commons Attribution 4.0 International License, which permits use, sharing, adaptation, distribution and reproduction in any medium or format, as long as you give appropriate credit to the original author(s) and the source, provide a link to the Creative Commons licence, and indicate if changes were made. The images or other third party material in this article are included in the article's Creative Commons licence, unless indicated otherwise in a credit line to the material. If material is not included in the article's Creative Commons licence and your intended use is not permitted by statutory regulation or exceeds the permitted use, you will need to obtain permission directly from the copyright holder. To view a copy of this licence, visit <http://creativecommons.org/licenses/by/4.0/>. The Creative Commons Public Domain Dedication waiver (<http://creativecommons.org/publicdomain/zero/1.0/>) applies to the data made available in this article, unless otherwise stated in a credit line to the data.

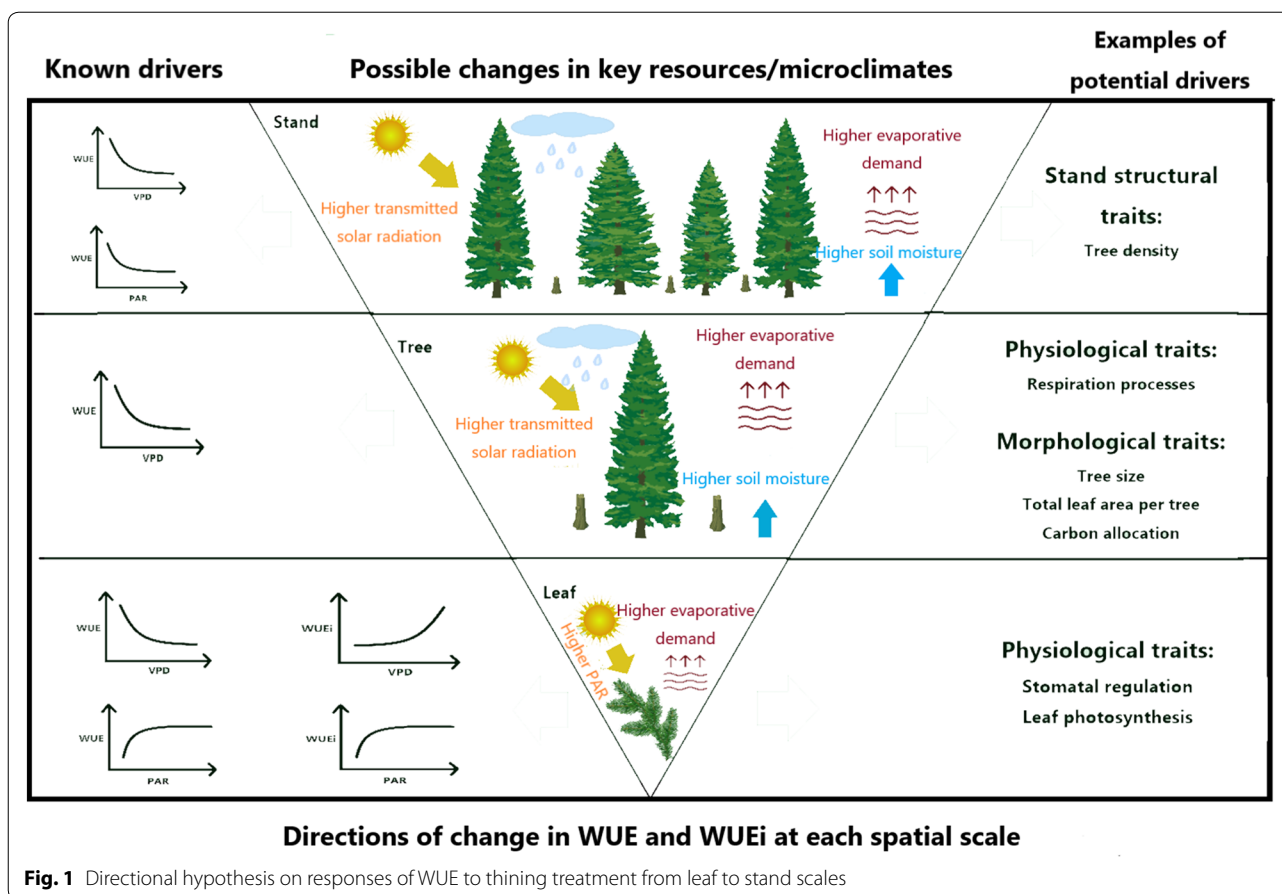
leaf transpiration. As exchanges of CO<sub>2</sub> and water vapor share the same diffusion pathway via stomata [84], intrinsic water-use efficiency (leaf-level WUE<sub>i</sub>, the ratio of net photosynthesis to stomatal conductance) is an alternative index for leaf-level carbon and water coupling, which excludes influences from evaporative demand on leaf transpiration [103]. At the individual tree level, WUE (tree-level WUE) is expressed as the ratio of tree growth (e.g., basal area increments, BAI) to whole tree transpiration [105]. And at the ecosystem level, WUE can be quantified as the ratio of gross primary production to evapotranspiration or the ratio of net primary production to transpiration (e.g., Petritsch et al. [85]. Understanding the responses of WUE at finer spatial levels at leaf and individual tree scales is essential to predicting carbon and water processes at larger spatial scales such as forest ecosystems.

Studies of forest WUE across multiple spatial scales are limited. Leaf-level studies generally focus on leaf-level WUE<sub>i</sub>, as detected from isotopic signatures of tree tissues. Isotopic leaf-level WUE<sub>i</sub> only accounts for intercellular and ambient CO<sub>2</sub> concentrations, but can cover periods of low light, low temperature and dry conditions. Leaf-level WUE, is usually measured using the gas exchange method, and reflects optimal conditions for trees (near light saturation and optimal ranges of temperature) as these field measurements are most commonly made during the day [103]. Leaf-level WUE<sub>i</sub> can also be measured using the gas exchange method, however, these two methods often produce different results [103]. The discrepancy between WUE<sub>i</sub> determined by the two different methods has been ascribed to the differences in the time scale (i.e., long term and short term) [103]. Some researchers have found that leaf-level WUE<sub>i</sub> tends to be a homeostatic trait [20, 37], while others have found that leaf-level WUE<sub>i</sub> responds to changes in plant morphology [13] and to climatic controls [1]. A review by Cernusak et al. [17] suggested that environmental factors modified leaf-level WUE<sub>i</sub>, and internal physiology which varies with species, dampening its responses. When scaling up from leaf to ecosystem levels there are even more complications involved, including physical and physiological processes within the ecosystem, errors and uncertainties associated with different measurement approaches and differences in temporal and spatial resolution, all of which lead to a lack of correspondence of WUE between different spatial levels [52, 71, 73, 75]. Contrasting evidence indicates that cautions should be used in choosing the most representative indicators of carbon and water coupling and scaling them up from leaf to ecosystem levels.

Predicting WUE requires knowledge of the relationships between WUE and micrometeorological forcing at

multiple spatial scales. A few leaf-level models including the equation developed by Wong and Dunin [104]; the Norman model [57, 82], the Cowan-Farquhar model [66], the Ball-Berry model [60] and the Farquhar model [35, 72] can predict the leaf-level WUE and WUE<sub>i</sub> reasonably well [57] either solely by their dependences on VPD or both the microclimatic variables and plant physiological parameters. Even though the equations embedded in those models for calculating leaf-level WUE and WUE<sub>i</sub> vary with models, all the equations show that the leaf-level WUE generally decreases while leaf-level WUE<sub>i</sub> increases with increasing VPD (Additional file 1: Table S1). The stand-level WUE calculated in the RESCAP (RESourceCAPture) model is also solely dependent on the VPD with an inversely proportional relationship [28] (Additional file 1: Table S1). Besides, there was a negative correlation between WUE at the tree and stand levels with VPD that has been either fitted with an exponential decay function or a reciprocal function (Additional file 1: Table S1). Therefore, the decreased WUE and probably an increased WUE<sub>i</sub> corresponding to an increasing VPD is generally expected at various spatial scales. Moreover, the relationship between WUE and VPD is also dependent on light intensity as stomata can react to decreases in photosynthesis under lower light intensity by closing, thus reducing transpiration [10, 62]. Water availability (e.g., soil water contents) can also influence the sensitivity of WUE to climatic variables through its effects on stomatal behavior [46]. Given the evidences that thinning changed the sensitivities of tree growth or tree transpiration to microclimates [53, 56, 68, 95], it is generally expected that forest thinning treatments would affect the WUE-microclimate relationships. This issue has not been fully studied yet. To our knowledge, only one research reported that the tree isotopic WUE<sub>i</sub> became sensitive to annual precipitation after thinning [36].

To date, few studies have focused on the effects of thinning on WUE across spatial levels and under ambient conditions [62, 97]. How thinning treatments affect the responses of WUE from leaf to stand scales is largely untested. Thinning treatments usually result in a higher direct incident radiation and net rainfall reaching the ground, higher soil temperature, air temperature and wind speed, and lower air humidity within treated stands [3, 8, 19, 23, 101] (Fig. 1). At the leaf level, increased photosynthetic active radiation and atmospheric evaporative demand due to a more opened canopy created by thinning treatments can exert direct effects on leaf photosynthesis, transpiration, and stomatal conductance. But the responses of leaf-level WUE and WUE<sub>i</sub> to thinning treatments are not consistent [24, 36, 69, 81, 99]. Thinning treatments can also cause morphological changes in trees



(e.g., promote tree size (and thus higher carbon stocks per tree) and total leaf area per tree (and thus higher tree transpiration)) and structural changes in forest stands (e.g., reduced tree density and thus lower carbon stocks per stand and a lower stand transpiration). It is unclear whether WUE and WUEi at a finer spatial level under thinning treatments show similar responses to thinning treatments at coarse spatial scales as the physiological processes operating at finer scales shift to morphological and stand structural changes operating at larger spatial scales following thinning treatments (Fig. 1).

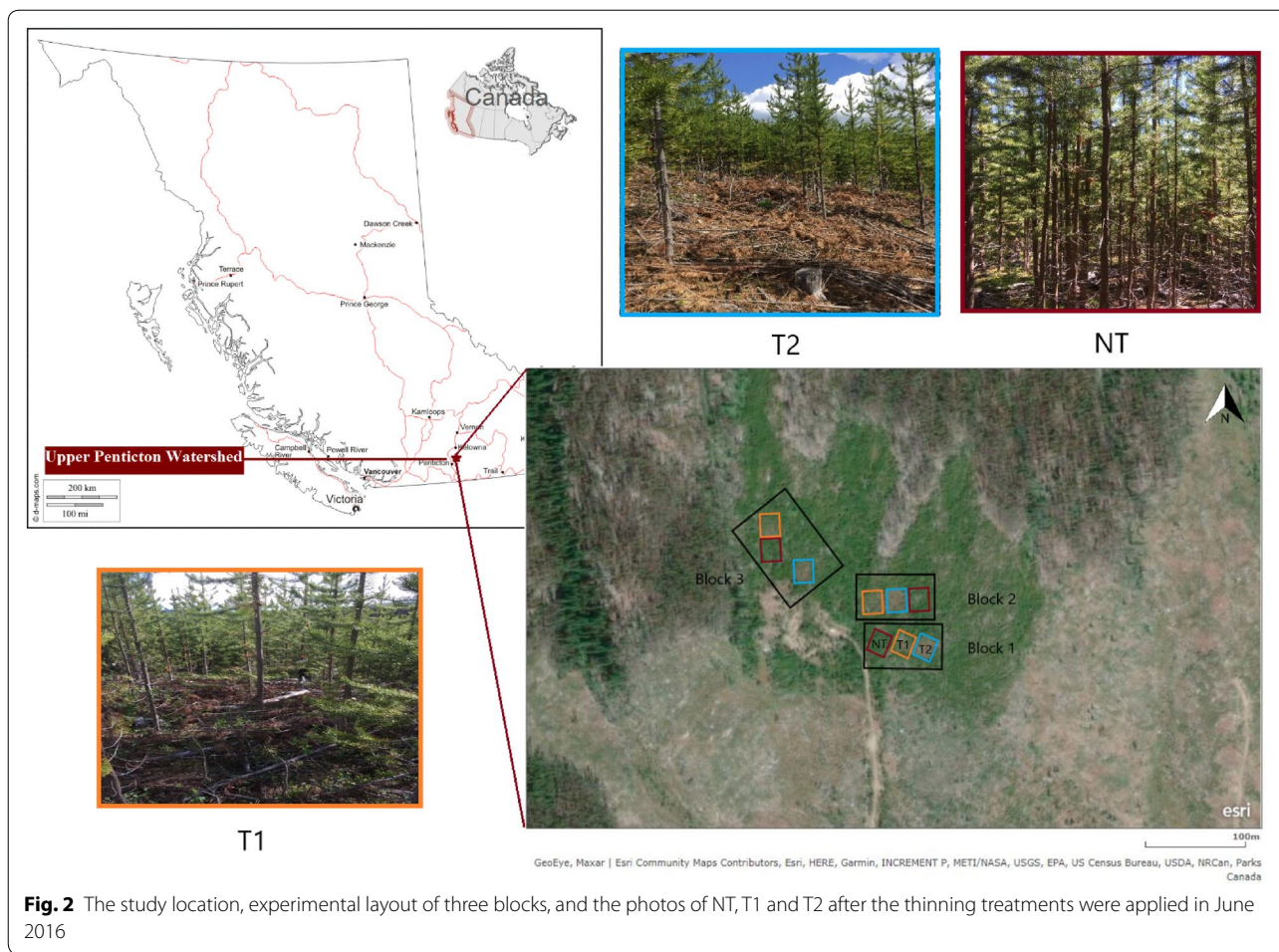
In the separate prior study in a young lodgepole pine forest in the interior of British Columbia, Canada, we examined the effects of juvenile thinning on tree-level radial growth, sap flow velocity and stand transpiration during a drought year (2017) and a non-drought year. We found that significant differences in tree growth and sap flow velocity, between light and heavy thinning treatments, only occurred in the drought year, and the strongest response in sap flow velocity to changes in VPD occurred where trees were most heavily thinned [100]. Building on our previous work, in this study we further assess the effects of juvenile thinning on WUE across

multiple spatial scales during the growing seasons of 2016 and 2017. The drought in 2017 provided an excellent opportunity of evaluating the responses of WUE to thinning treatments under these conditions. In this study, based on the theoretical relationships between WUE or WUEi (given in the “Method” section) and microclimates (as listed in Additional file 1: Table S1), we hypothesized that: (1) the juvenile thinning would decrease leaf-level WUE while increases leaf-level WUEi, if VPD would be increased by the thinning treatments, (2) there were consistent responses of WUE and WUEi to thinning treatments across three spatial scales (leaf, tree and stand) and under the drought condition; and (3) thinning would alter the sensitivity of WUE to microclimatic variables at all three spatial scales.

**Methods**

**Study area and experimental design**

The study was conducted in an even-aged 16 years old lodgepole pine (*Pinus contorta* Dougl.) forest in the Upper Penticton Watershed (UPW) in the southern interior of British Columbia, Canada (49°39’34’’N, 119°24’34’’W) (Fig. 2). The site is located at 1675 m a.s.l,



on a south-facing slope. Soils were derived from granitic parent material, are coarse sandy-loam in texture, with low water holding capacities, and were classified as Podzols and Brunisols. Snow cover lasts from early November through to the middle of June.

In June 2016, two thinning treatments (Treatment 1 (T1: 4500 stems per ha); Treatment 2 (T2: 1100 stems per ha) and one unthinned control (NT: 27,000 stems per ha) were randomly assigned to the three plots (20 m × 20 m each) within each of the three blocks; B1, B2 and B3 (25 m × 75 m each). The slash was left on site. The understory vegetation in each plot was sparse (Fig. 2). The dominant trees DBH values range from 30 mm to 60 mm, accounting for 81.8%, 80.5% and 80.5% for NT, T1 and T2, respectively. The mean tree DBH values are 43.7, 43.5 and 51.7 mm, and the mean tree heights are 4.4, 4.1 and 4.6 m, for NT, T1 and T2 respectively, based on measurements of 45 trees for each plot immediately after the thinning treatments were applied. The crown heights range from around 1.5 m to 5 m. There was no significant difference on the initial stand conditions (tree DBH and height) among NT, T1 and T2.

The mean annual precipitation from 1986 to 2014 was 763 mm with less than one-third precipitation in the growing season (between June to October) and the mean annual temperature is 1.9 °C. The year 2017 was classified as a drought year based on the Standardized Precipitation Index (SPI). The mean daily temperature during the growing season of 2017 is 12.1 °C, and the total growing season precipitation is 37.4 mm. Detailed information on the study site and the experimental design can be found in Wang et al. [100].

**Leaf-level measurements**

Leaf-level WUE ( $\mu\text{mol mmol}^{-1}$ ) was calculated as the ratio of leaf photosynthesis rate ( $A$ ,  $\mu\text{mol CO}_2 \text{ m}^{-2}\text{s}^{-1}$ ) to leaf transpiration rate ( $T_{\text{leaf}}$ ,  $\text{mmol H}_2\text{O m}^{-2}\text{s}^{-1}$ ). Leaf-level WUEi ( $\mu\text{mol mol}^{-1}$ ) was calculated as the ratio of  $A$  to stomatal conductance ( $g_s$ ,  $\text{mol H}_2\text{O m}^{-2}\text{s}^{-1}$ ).

$$\text{Leaf-level WUE} = \frac{A}{T_{\text{leaf}}} \tag{1}$$



$$\text{Leaf-level WUE}_i = \frac{A}{g_s}. \quad (2)$$

Under the steady state condition (Beer et al. [9] when the leaf temperature equals to the air temperature, and when the water vapor pressure difference between inner leaf and ambient air can be approximated by atmospheric VPD [109], the leaf-level photosynthesis (A) transpiration ( $T_{\text{leaf}}$ ), WUE and  $\text{WUE}_i$  can be computed using Fick's law [38]. As described by Zhou et al. [109],

$$A = g_s \frac{(c_a - c_i)}{1.6p_a} \quad (3)$$

$$T_{\text{leaf}} = g_s \frac{\text{VPD}}{p_a} \quad (4)$$

$$\text{Leaf-level WUE} = \frac{A}{T_{\text{leaf}}} = \frac{(c_a - c_i)}{1.6\text{VPD}} = \frac{c_a \left(1 - \frac{c_i}{c_a}\right)}{1.6\text{VPD}} \quad (5)$$

$$\text{Leaf-level WUE}_i = \frac{A}{g_s} = \frac{(c_a - c_i)}{1.6} = \frac{c_a \left(1 - \frac{c_i}{c_a}\right)}{1.6}. \quad (6)$$

where,  $g_s$  is the stomatal conductance of  $\text{H}_2\text{O}$  ( $\mu\text{mol m}^{-2}\text{s}^{-1}$ ),  $c_a$  is the atmospheric  $\text{CO}_2$  concentration ( $\mu\text{mol mol}^{-1}$ );  $c_i$  is the intercellular  $\text{CO}_2$  concentration ( $\mu\text{mol mol}^{-1}$ ); and  $p_a$  is the atmospheric pressure (hPa); and the factor 1.6 arises from the fact that  $g_s$  is 1.6 times larger than leaf  $\text{CO}_2$  conductance.

According to Eq. (5) and (6), the leaf-level  $\text{WUE}_i$  can be regarded as the product of leaf-level WUE and the leaf to air vapour pressure deficit (i.e., leaf-level  $\text{WUE}_i = \text{leaf-level WUE} \times \text{VPD}$ , or alternatively, leaf-level  $\text{WUE} = \text{leaf-level WUE}_i / \text{VPD}$ ) [49, 62, 90, 103].

All the variables were measured using the LI-6400XT instantaneous photosynthesis measurement system (Licor, Lincoln, NE, USA) with an opaque conifer chamber (Model 6400-22) and an external RGB light source (6400-18A). Measurements were made approximately once per week, from June, 23rd, 2017 until October 08th, 2017, between 10:00 am and 14:00 pm. On each measurement date, five trees in each plot from the same block were randomly selected, and for each tree, four bunches of needles orienting north, south, east and west at the similar location of the bottom layer of the tree canopy (around 1.5–1.7 m height) were logged for three consecutive times. We took the average of the three consecutive records for each aspect per tree. In order to mimic the natural environment when

conducting the chamber measurement, the temperature was set as the ambient temperature, the light conditions were set to reflect the ambient light levels, and the leaf chamber was sealed with gum in case of gas leakage. Flow rate of air was set at  $500 \mu\text{mol s}^{-1}$  to minimize any effect of the equipment on the environmental variables [74]. The microclimatic variables inside the leaf chamber sometimes might not exactly correspond to their outside environments, therefore, the outputs including temperature, VPD and PAR measured from the sensors inside the chamber were selected for analyzing leaf level responses to microclimates.

### Tree-level measurements

Tree-level WUE ( $\text{mm}^2 \text{kg}^{-1}$ ) is calculated as the ratio of basal area increment (BAI,  $\text{mm}^2 \text{d}^{-1}$ ) to tree transpiration ( $T_{\text{tree}}$ ,  $\text{kgd}^{-1}$ ).

$$\text{Tree-level WUE} = \frac{\text{BAI}}{T_{\text{tree}}}. \quad (7)$$

There were five trees per plot in B1 (namely sap flow trees) (15 trees in total) installed with the Granier-type sap flow probes (Model TDP-30, Dynamax, Inc., Texas, USA) at the breast height (1.3 m above ground). Tree transpiration was calculated based on the sapwood area and the continuously measured sap flow velocity as described by Wang et al. [100]. Detailed descriptions of DBH and sap flow measurements and their related quality control can also be found in Wang et al. [100]. BAI was calculated based on the diameter at breast height (DBH) of the five sap flow trees per plot in B1 by an electronic caliper (Model:500-196-30, Mitutoyo Corporation, Japan) at the beginning and the end of each growing season of 2016 and 2017. The DBH of 45 trees per plot across the three blocks was measured monthly using the same electronic caliper in the two growing seasons and was used in the allometric equation for calculating stand-level above-ground biomass and the stand transpiration as described in the next section.

### Stand-level estimations

Stand-level WUE ( $\text{kg m}^{-3}$ ) is calculated as the ratio of stand net primary production (NPP,  $\text{kg m}^{-2} \text{d}^{-1}$ ) to stand transpiration ( $T_{\text{stand}}$ ,  $\text{mm d}^{-1}$ ). Stand-level intrinsic WUE (stand-level  $\text{WUE}_i$ ,  $\text{kg m}^{-3}$ ) is calculated as the ratio of NPP to canopy conductance ( $G_s$ ,  $\text{mm d}^{-1}$ ).

$$\text{Stand-level WUE} = \frac{\text{NPP}}{T_{\text{stand}}} \quad (8)$$

$$\text{Stand-level WUE}_i = \frac{NPP}{G_s}. \quad (9)$$

Given that the studied stand is an even-aged and mono-specific forest with sparse understory, NPP is estimated by changes in the stand above-ground biomass ( $AGB_{\text{stand}}$ , g) in each growing season, and  $T_{\text{stand}}$  ( $\text{mm d}^{-1}$ ) is estimated from the tree transpiration, stand density and DBH distribution, as reported in Wang et al. [100]. Tree AGB ( $AGB_{\text{tree}}$ ) is estimated by the tree allometric equations based on 24-year-old lodgepole pine trees from a range of stand densities across the Yellowstone subalpine plateaus [22].

$$AGB_{\text{tree}}(\text{g}) = 98.85 \times \text{basal diameter (cm)}^{1.99} \quad (10)$$

$$AGB_{\text{stand}} = \text{mean } AGB_{\text{tree}} \times \text{stand density} \quad (11)$$

$$NPP = \Delta AGB_{\text{stand}}. \quad (12)$$

Paired measurements of tree DBH and basal diameter from 180 trees across all three blocks were used to build a linear relationship between basal diameter and tree DBH, as reported in our previous study [100].

$G_s$  was used as a proxy to indicate stomatal response at the canopy level. It was calculated by the simplified inversion of the Penman–Monteith equation, assuming that the VPD is close to the leaf to air vapor pressure deficit with no vertical gradient through canopy, and negligible water storage above the point where sap flow probes were inserted [34]. This method has also been applied in lodgepole pine forests [89]. The conditions of our young lodgepole pine stands, including low canopy height (<2.5 m) and relatively open canopies (canopy closure <55%), generally satisfy the assumptions of the equation.

$$G_s = \frac{\gamma \lambda E_{LA}}{\rho_a c_a VPD} \quad (13)$$

where,  $\gamma$  is the psychrometric constant ( $0.067 \text{ kPa K}^{-1}$ );  $\lambda$  is the latent heat of vaporization calculated by Harrison's equation,  $\lambda = 2.501 - 2.361 \times 10^{-3} T_a$  [55];  $E_{LA}$  is the transpiration per leaf area,  $E/LA$  ( $\text{mms}^{-1}$ );  $\rho_a$  is air density ( $1.225 \text{ kg m}^{-3}$ );  $c_a$  is the specific heat of air ( $1.0 \times 10^{-3} \text{ MJ kg}^{-1} \text{ K}^{-1}$ ); and VPD is vapor pressure deficit (kPa). All VPD data used in the equation are greater than 0.6 kPa to minimize the relative errors (<10%) [34].

Monthly leaf area (LA,  $\text{m}^2$ ) was also estimated from the tree allometric equations from Copenhagen and Tinker [22].

$$LA \left( \text{in } \text{m}^2 \right) = 0.02 \times \text{Basal diameter (in cm)}^{2.34} \quad (14)$$

Leaf area index (LAI) was estimated by dividing LA by the projection coefficient (2.5) [64]. The estimated mean monthly LAI in 2016 for C (0.96) matches relatively well with the field measurement (0.97).

#### Collection of climate data

Climatic variables including solar radiation ( $R_n$ ,  $\text{W m}^{-2}$ ), air relative humidity (RH, %), temperature ( $T$ ,  $^{\circ}\text{C}$ ), precipitation ( $P$ , mm) and wind velocity ( $W_v$ ,  $\text{m s}^{-1}$ ) were continuously measured in each treatment in B1 by a HOBO weather station (Onset Computer, Bourne MA, USA). The sensors were placed at canopy level (approximately 2.5 m). VPD is calculated based on Goff–Gratch equation [48]. Microclimate variables including leaf temperature, leaf VPD and incoming photosynthetically active radiation (PAR,  $\mu\text{mol (photons) m}^{-2} \text{ s}^{-1}$ ), at a height of approximately 1.5–1.7 m, across the three blocks (9 plots) at mid-day on a weekly basis during the growing season, were recorded by the instantaneous photosynthesis measurement system (Model LI-6400XT, Licor, Lincoln, NE, USA). Soil volumetric water content (VWC) at two depths (20 and 40 cm) in three randomly selected locations per plot in B1 was measured by EC-5 sensors (Decagon, Pullman, WA, USA) at 20-minute intervals. Soil VWC at the 20 cm depth was also manually measured weekly in the three blocks using a GS-1 portable measuring system (Decagon, Pullman, WA, USA).

#### Statistical analysis

The instantaneous leaf-level WUE and  $WUE_i$  were first analysed by multi-factor AVOVA to investigate the effects of branch aspect, thinning, date and their interactions. Since there were no significant effects of the branch aspect and its interactions (Additional file 1: Table S2), measurements of the four aspects per tree were averaged to yield more integral responses of leaf-level WUE and  $WUE_i$  for each tree. The averaged leaf-level WUE and  $WUE_i$  per tree were analyzed by the two-way ANOVA to investigate the effects of thinning, date and their interactions (5 replicates per measuring date for each treatment). Tree-level WUE, BAI and transpiration of the 15 monitoring trees during the two growing seasons were analyzed by ANCOVA with the initial DBH of the trees as covariate, and the thinning treatments and the year as factors (5 replicates per treatment per growing season). Stand-level WUE values were calculated for each plot and then were analyzed by the two-way ANOVA analysis with the thinning treatments and the year as factors (3 replicates per treatment per growing season). Stand-level  $WUE_i$  were only analyzed in 2017 due to the requirement of the canopy conductance model on that VPD should be

greater than 0.6 kPa (3 replicates per treatment). Model residuals were checked to meet the requirements of normality and homoscedasticity of variance. In most cases, the assumptions were satisfied, except the stand-level WUE and NPP, even though multiple data transformation methods including log, square roots and cubic roots and Box-Cox transformation were applied. Therefore, comparisons on stand-level WUE and NPP between two groups of the treatments or between years were performed with independent-t test, if data met the requirements of homogeneity of variance and normality, or alternatively, the Mann–Whitney U test if those assumptions were violated.

In order to analyze the responses of tree-level WUE to microclimatic variables, the monthly tree-level WUE for each tree was calculated as the ratio of the monthly increment of the tree BAI to the corresponding tree transpiration during the same period. These monthly tree-level WUE were further grouped to yield the average monthly tree-level WUE under each thinning treatment. The responses of the averaged monthly tree-level WUE for NT, T1, and T2 to their corresponding mean daily values of microclimatic variables under the same time interval were analyzed by Spearman correlation test. If the results of the correlation test were significant, the relationship between the monthly tree-level WUE for NT, T1 and T2 with microclimate were fitted by the established equations as summarized in the Additional file 1: Table S1. The responses of the monthly stand-level WUE and WUE<sub>i</sub> under each treatment (i.e., the average of the three plots under the same thinning treatment) to corresponding microclimate were analyzed in the similar way as the tree-level analyses. It is noted that DBH data were subject to some measuring errors, which resulted in the negative increments of tree BAI. These negative values were kept in the analyses for the responses of WUE and WUE<sub>i</sub> to the thinning treatments of the two growing seasons. However, these negative values were excluded in the analyses for WUE–or WUE<sub>i</sub>–microclimate relationships, as they would be unrealistic for microclimate variables to correspond with negative WUE or WUE<sub>i</sub> values. Monthly stand-level WUE<sub>i</sub> were only available in August of 2016 and in July and August of 2017 when VPD conditions were appropriate for the application of the simplified Penman–Monteith equation introduced in the previous section. A significance level of  $p < 0.05$  was used for all analyses. All data were processed by R (R Core Team (2014)) and SPSS for Windows (SPSS, Inc., USA).

## Results

### Effects of thinning on leaf-level WUE and WUE<sub>i</sub>

Thinning did not significantly affect leaf-level WUE ( $p = 0.65$ , Additional file 1: Table S3), with mean

leaf-level WUE values for NT, T1 and T2 being  $5.91 \pm 3.25$ ,  $5.63 \pm 4.65$  and  $5.30 \pm 2.76$   $\mu\text{mol mmol}^{-1}$ , respectively. However, thinning had a significant impact on leaf-level WUE<sub>i</sub> ( $p < 0.001$ , Additional file 1: Table S3), with the averaged leaf-level WUE<sub>i</sub> for NT, T1 and T2 being  $98.41 \pm 52.89$ ,  $64.23 \pm 50.39$  and  $61.82 \pm 40.99$   $\mu\text{mol mol}^{-1}$ , respectively. Leaf-level WUE<sub>i</sub> in NT was statistically higher than those in T1 and T2 (both  $p < 0.001$ ), while T1 and T2 did not significantly differ from each other ( $p = 0.80$ ) (Fig. 3).

### Effects of thinning on tree-level WUE

The ANCOVA test showed that thinning significantly affected tree-level WUE ( $p = 0.026$ , Additional file 1: Table S4). Looking into the separate growing seasons, the mean tree-level WUE for NT, T1 and T2 in 2016 were  $0.09 \pm 0.64$ ,  $0.85 \pm 1.27$  and  $0.81 \pm 0.90$   $\text{mm}^2 \text{kg}^{-1}$ , respectively, and they were not significantly different from each other ( $p = 0.403$ ). These values were reduced to  $0.08 \pm 0.31$ ,  $0.39 \pm 0.18$  and  $0.49 \pm 0.18$   $\text{mm}^2 \text{kg}^{-1}$  in 2017, respectively, and only tree-level WUE in NT and T2 were statistically different ( $p = 0.03$ ). Thus, the heavier thinning significantly improved tree-level WUE in the drought year.

However, the ANCOVA test showed that tree-level WUE did not differ between years for the three groups ( $p = 0.56$ , Additional file 1: Table S4). This was probably due to the large variances in the tree-level WUE of T1 and T2 in the non-drought year (Fig. 4). In addition, there was no significant interaction effect between the year and thinning ( $p = 0.84$ , Additional file 1: Table S4).

### Effects of thinning on the stand-level WUE and WUE<sub>i</sub>

Thinning did not have significant impacts on the stand-level WUE by pooling two-year data together (one-way ANOVA,  $p = 0.18$ ). In 2016, the stand-level WUE values were  $0.05 \pm 0.85$ ,  $0.62 \pm 0.55$ , and  $0.63 \pm 0.69$   $\text{kg m}^{-3}$  for NT, T1 and T2, respectively, and there were no significant differences among them (one-way ANOVA,  $p = 0.55$ ). In 2017, the stand-level WUE values were changed to  $0.31 \pm 0.08$ ,  $0.56 \pm 0.11$ , and  $0.70 \pm 0.13$   $\text{kg m}^{-3}$  for NT, T1, and T2, respectively, with the WUE in NT being significantly lower than those in T1 ( $p = 0.03$ ) and T2 ( $p = 0.005$ ), suggesting the positive thinning effects only occurred in the drought year. However, there was no statistical difference between T1 and T2 ( $p = 0.18$ ). Besides, when comparing stand-level WUE between years for each group of NT, T1 and T2, no significant differences were found (all  $p > 0.1$ ).

Stand-level WUE<sub>i</sub> values in 2017 were  $0.36 \pm 0.06$ ,  $0.13 \pm 0.02$ , and  $0.12 \pm 0.04$   $\text{kg m}^{-3}$  for NT, T1 and T2 respectively. NT had statistically higher WUE<sub>i</sub> than T1

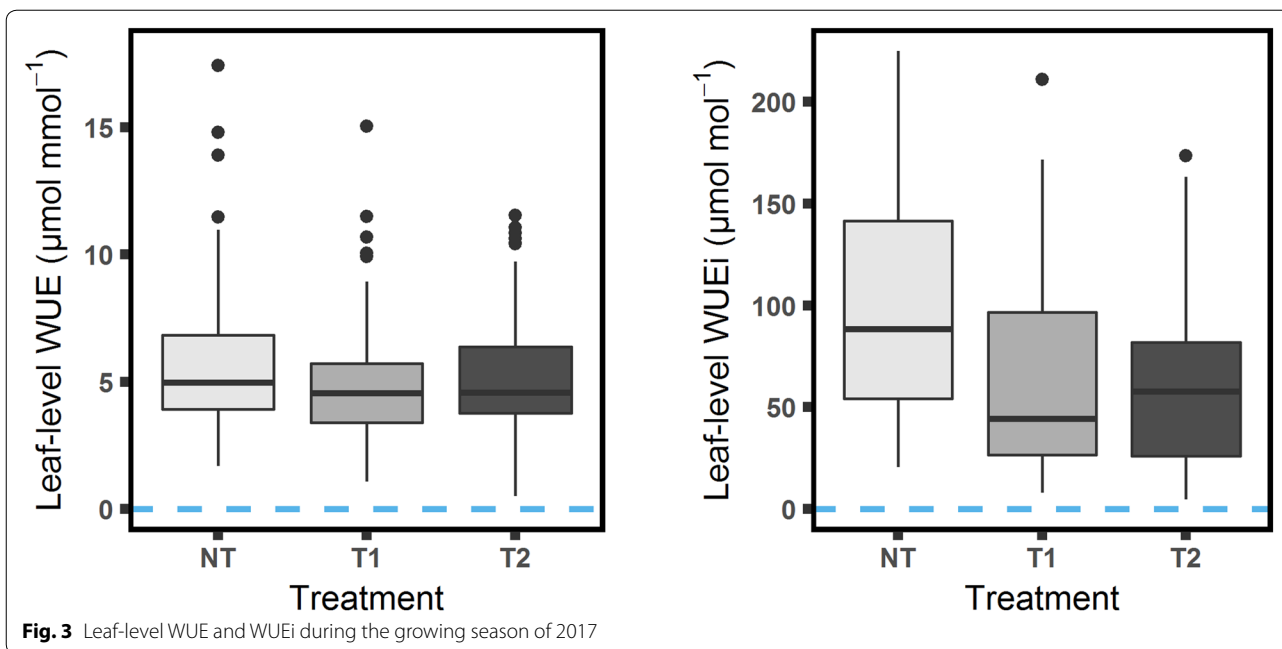


Fig. 3 Leaf-level WUE and WUEi during the growing season of 2017

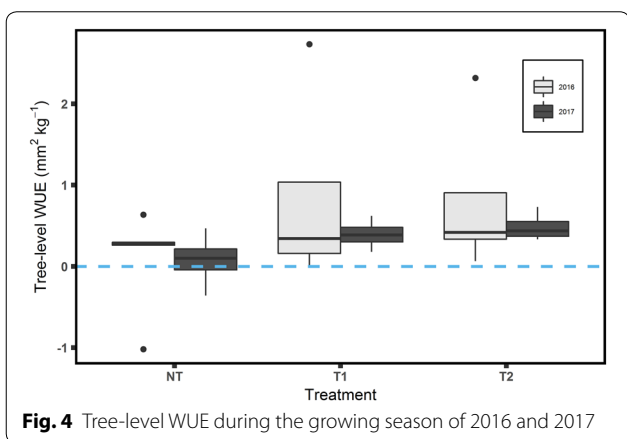


Fig. 4 Tree-level WUE during the growing season of 2016 and 2017

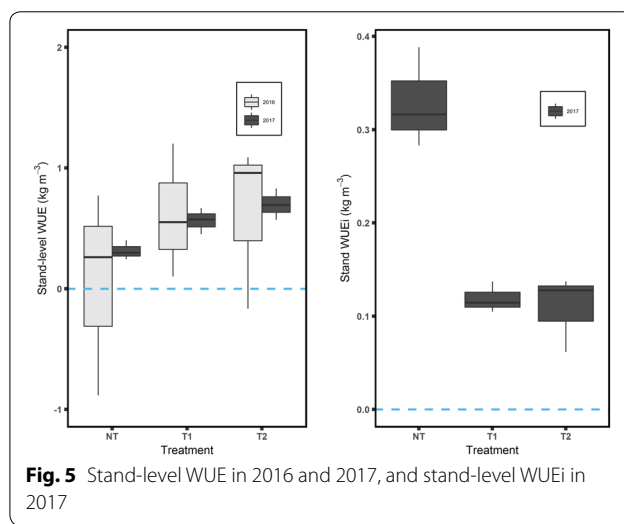


Fig. 5 Stand-level WUE in 2016 and 2017, and stand-level WUEi in 2017

and T2 did (both  $p=0.001$ ), and there was no significant difference between T1 and T2 ( $p=0.77$ ) (Fig. 5).

**Responses of leaf-level WUE and WUEi to VPD and PAR**

Leaf-level WUE was significantly negatively correlated with VPD (spearman  $\rho=-0.25$ ,  $p=0.002$ , Table 1), while leaf-level WUEi exhibited a significantly positive relationship with VPD ( $\rho=0.45$ ,  $p<0.001$ , Table 1). Both the responses of leaf-level WUE and WUEi to VPD did not significantly differ among NT, T1 and T2, but the VPD relationship with leaf-level WUE was best fitting with the exponential decay equation ( $R^2=0.074$ , Additional file 1: Table S1), while that with leaf-level WUEi was best with the parabolic equation ( $R^2=0.23$ ,

Additional file 1: Table S1) (Fig. 6). As for their responses to PAR, only leaf-level WUE exhibited significant correlations ( $\rho=0.33$ ,  $p<0.001$ , Table 1), and there were no significant differences among NT, T1, and T2 (Fig. 7). However, the responses of leaf-level WUEi to VPD were different when PAR was higher than  $2500 \mu\text{mol}/\text{m}^2\text{s}$  (Fig. 7).

**Responses of tree-level WUE to VPD and transmitted solar radiation**

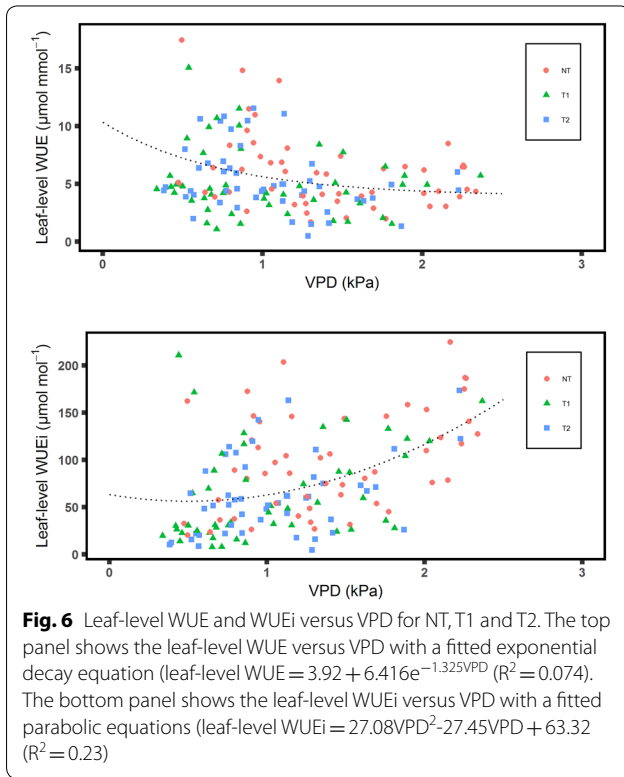
Tree-level WUE was negatively and significantly correlated with VPD ( $\rho=-0.54$ ,  $p=0.04$ , Table 1), and



**Table 1** Correlation coefficients between WUE with VPD, light intensity and soil water content

WUE across spatial scales	VPD	Light intensity (PAR or Transmitted solar radiation)	Soil water content at 20 cm	Soil water content at 40 cm
Leaf-level				
Leaf-level WUE	-0.25***	0.33***	-0.25	-0.37**
Leaf-level WUEi	0.45***	0.11	-0.47***	-0.55***
Tree-level				
Tree-level WUE	-0.54**	-0.37	0.07	-0.03
Stand-level				
Stand-level WUE	-0.79***	-0.61**	-0.005	-0.14
Stand-level WUEi	-0.20	-0.85***	-0.40	-0.64*

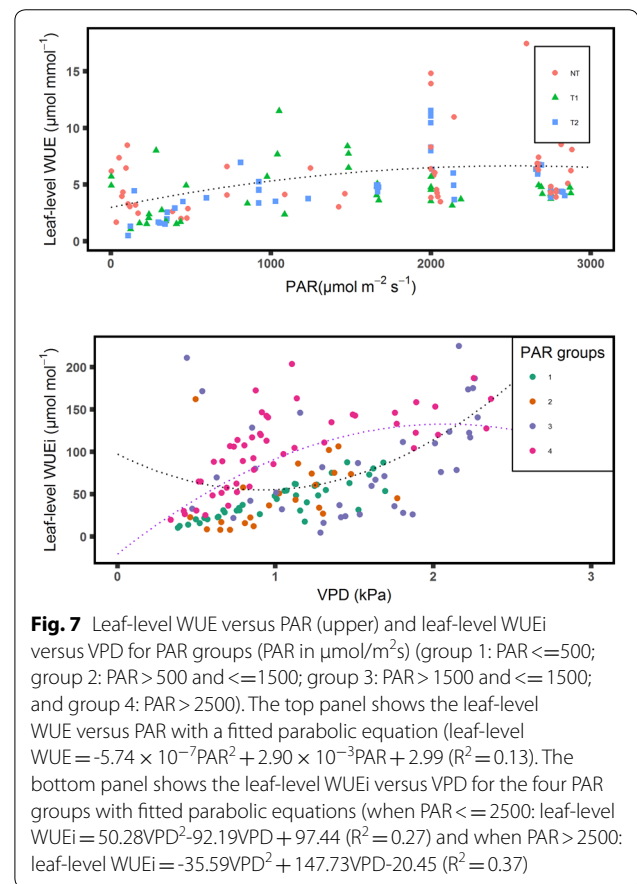
Light intensity includes PAR at the leaf level and transmitted solar radiation at tree and stand levels. Star indicates the significant level at 0.01\*\*\*, 0.05\*\*, and 0.1\*



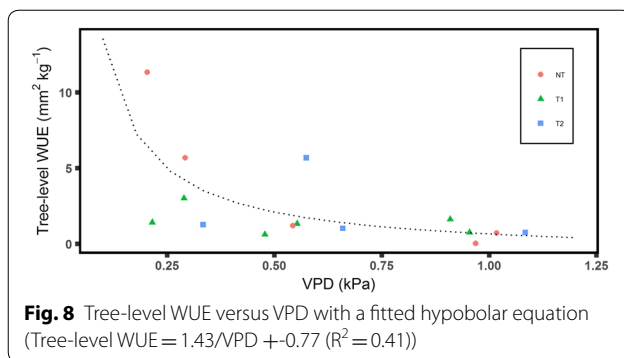
there were no any significant differences among NT, T1 and T2 (Fig. 8). There were no significant correlations between tree-level WUE and transmitted solar radiation (p=0.18), and the transmitted solar radiation did not significantly influence the responses of tree-level WUE to VPD.

**Responses of the stand-level WUE and WUEi to VPD and transmitted solar radiation**

The stand-level WUE was negatively and statistically correlated with VPD (rho=-0.79, p<0.001, Table 1)



and transmitted solar radiation (rho=-0.61, p=0.01, Table 1), but the correlations with VPD and with transmitted solar radiation did not significantly differ among NT, T1 and T2 (Fig. 9). However, there was no any significant correlation between stand-level WUEi and VPD (p=0.64), but stand-level WUEi was significantly correlated with transmitted solar radiation (rho=-0.85, p=0.008) (Fig. 9).



**Fig. 8** Tree-level WUE versus VPD with a fitted hypobolar equation (Tree-level WUE =  $1.43/VPD + 0.77$  ( $R^2 = 0.41$ ))

## Discussion

### The effects of thinning on WUE across the spatial scales

In contrast to our first hypothesis, leaf-level WUE values were not significantly different among NT, T1 and T2, while leaf-level WUE<sub>i</sub> was statistically higher in NT than in the thinned stands, and there were no significant differences between the two thinning intensities. Comparing the underlying processes of leaf-level WUE and WUE<sub>i</sub>, leaf photosynthesis, transpiration and stomatal conductance were all significantly lower in NT than in the thinned stands (all  $p < 0.001$ ), with no statistical difference between T1 and T2 (all  $p > 0.1$ ) (Additional file 1: Figure S1), which is in accordance with previous studies showing higher leaf photosynthesis, leaf transpiration and stomatal conductance in the lower density stands with a wide range of tree densities and species [12, 80, 97]. Therefore, similar leaf-level WUE between the treatments in our study can be attributed to similar enhancements of the leaf photosynthesis and transpiration, while the higher leaf-level WUE<sub>i</sub> in NT might be due to more positive effects of thinning on stomatal conductance than on the leaf transpiration.

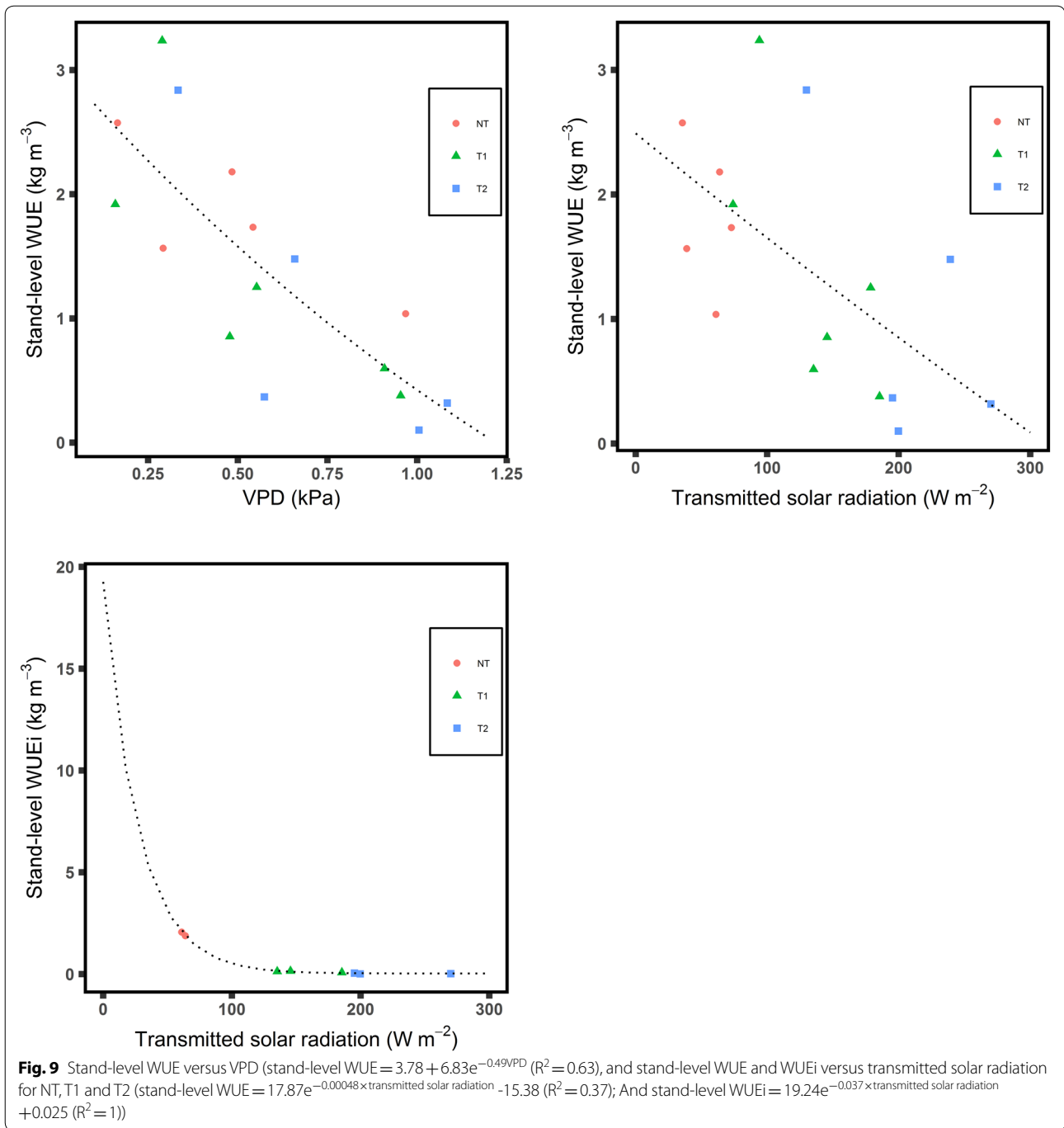
Our results for leaf-level WUE<sub>i</sub> between T1 and T2 agrees with studies showing that thinning has no effects on WUE<sub>i</sub> in Scots pine (*Pinus sylvestris*) and maritime pine (*Pinus pinaster*) [81], Aleppo pine (*Pinus halepensis* Mill.) [36], and black pine (*Pinus nigra* Arn.) [69] stands in Mediterranean forests, based on the isotope method. However, our results are in contrast to studies which were conducted using the leaf gas-exchange measurements in young paper birch (*Betula papyrifera* Marsh.) stands [99] and in oak saplings (*Quercus cerris* L.), and in ash (*Fraxinus ornus* L.) forests [24]. They attributed the increased leaf-level WUE<sub>i</sub> to increased PAR induced by their thinning treatments [24, 99].

In our study, VPD, instead of PAR, might explain the discrepancy between the responses of leaf-level WUE and WUE<sub>i</sub>, and the significantly higher leaf-level WUE<sub>i</sub> in NT. VPD during the leaf measurement periods

was statistically higher in NT than in T1 and T2 (both  $p < 0.001$ ) with no significant differences between T1 and T2 ( $p = 0.29$ , Additional file 1: Figure S4) and leaf-level WUE<sub>i</sub> approximates the product of leaf-level WUE and VPD [62, 103]. Further, in comparison with temperature and PAR, VPD was the only microclimate variable that significantly differed in the control than in the thinned stands during the leaf measurement periods. As VPD is determined by temperature and RH, and RH is influenced by soil evaporation and plant transpiration [5, 25, 39], higher VPD in NT can be attributed to a lower soil water content and a higher stand transpiration in NT, as shown in our previous study [100]. VPD can indicate that atmospheric drought [14], and increased WUE<sub>i</sub> are commonly observed under drought conditions (Andrés et al. [4, 36, 61]). Therefore, higher leaf-level WUE<sub>i</sub> in NT suggests that the unthinned stand experienced more severe water stress than the thinned stands.

However, VPD could either increase [5, 51, 101], or remain unchanged [18, 76, 78, 86] with increasing thinning intensities. Though microclimates play important roles in influencing leaf-level WUE<sub>i</sub>, their effects may be site-specific. We also acknowledge that the field measurements in our study were conducted from 10 am to 14 pm, and consequently, the results may not fully represent the effects of thinning on mean daily leaf-level WUE and WUE<sub>i</sub> on a 24-h basis. This shortcoming could be addressed by using the isotopic method, which will be considered in our future study.

At the tree level, we found significant and positive impacts of thinning on tree-level WUE (Fig. 4, Additional file 1: Table S4), tree BAI and tree transpiration (Additional file 1: Table S4 and Additional file 1: Figure S2). Our result agrees with other studies showing that thinning increased tree-level WUE in Aleppo pine (*Pinus halepensis* Mill.), Silvertop (*Eucalyptus nitens*) (Deane and Maiden) and Norway spruce (*Picea abies* [L.] Karst.) forests [36, 40, 44], a conclusion based on observations of enhanced tree transpiration accompanied with increased tree growth. Park et al. [83] found that the significant differences in tree-level WUE between heavy thinning and control stands only occurred in high growth years in a 50-year-old Korean pine (*Pinus koraiensis*) stand. The enhancement of tree-level WUE was mainly attributed to a lower water stress under a more intense thinning treatment [15, 27, 44, 83]. Therefore, the effects of thinning on tree-level WUE depend on how thinning reduces tree competition for resources (e.g., water, light and nutrients) as indicated by Fernández-de-Uña et al. [37], and thus these can be more pronounced in a drought year, as observed by Park et al. [83]. This has been confirmed by our study in which increasing tree-level WUE



associated with a higher thinning intensity was more obvious in the drought year (2017) than in the normal year (2016).

The discrepancy of WUE between the tree and leaf levels in 2017 suggested that the responses of tree-level WUE to thinning treatments is more resulted from tree-level physiological processes instead of the

leaf-level changes. Tree-level physiological changes due to thinning treatments may include the stem respiration processes [75], the tree carbon allocation pattern under droughts [87], and the night-time transpiration [33, 75]. Stem respiration, however, was greater in the thinned stands [59], and thus is unlikely to contribute to a possible explanation of our observations. Under

water stress, lodgepole pine tends to allocate more biomass to their root system to improve water acquisition [87], which may serve as a potential explanation. In order to infer the effect of the night-time transpiration, we calculated the percentage of the tree daily night sap flow (from 1 h after sunset to 1 h before dawn [75] to the tree daily total sap flow, since the night sap flow is usually partitioned into the night transpiration and the stem refilling [41]. We found that tree daily night sap flow accounted for  $29.7 \pm 26.1\%$ ,  $11.9 \pm 14.1\%$  and  $6.5 \pm 11.9\%$  of the total tree daily sap flow in 2017 for NT, T1 and T2, respectively, all of which were significantly different from each other (all  $p < 0.001$ ). If tree transpiration did occur at night at our study site during the experiment period, it is possible that the trees in NT had the highest daily non-productive water consumption, while those in T2 had the lowest, contributing to a significantly low tree-level WUE in NT but high tree-level WUE in T2. The fact that night transpiration reduces whole-plant WUE and consequently causes a lack of correspondences in WUE between leaf and whole-plant scales has been well documented [33, 75]. But in our study, the night-time VPD was generally highest in T2, followed by NT, and then T1 (Additional file 1: Figure S5), and soil water contents were substantially higher in the thinned stands [100], so that VPD and soil water contents alone can not explain the patterns of tree night sap flow found in our study. However, under drought conditions, stomatal conductance can be unrelated to VPD and soil water content, which leads unavoidable water loss through the epidermis of tree needles (e.g., 6–8% of daily transpiration under well-watered conditions in comparison with 19–20% of daily transpiration during drought) [16]. This may help to explain the result of our study. Nevertheless, our conclusion was only based on one drought year. Continuous monitoring of the study site is needed to further strengthen the mechanisms behind the thinning and drought effects.

Stand-level WUE responses to the thinning treatments were slightly different from the tree-level WUE in this study. There was the lack of significance of the overall thinning effects on the stand-level WUE in the normal year of 2016, suggesting that forest structural properties damped the WUE responses to the thinning treatments from the tree to stand levels. It is however, also possible that the large variations in stand-level WUE in 2016 might obscure the effects of thinning (Fig. 5).

Our stand-level WUE result is within the range of the AGB-based WUE [40], and agree well with studies reporting that thinning or drought increased stand-level WUE [40, 91]. In fact, stand-level or ecosystem

WUE can either increase [91], remain unchanged [91] or even decrease (Gao et al. [43] under drought conditions, depending on forest characteristics (e.g., mixed or monospecific), tree species and environmental conditions. The increased stand-level WUE in the drought year in our study were likely attributed to slightly decreases in the net accumulation of stand aboveground biomass accompanied by a greater reduction in stand transpiration under the drought (Additional file 1: Figure S3).

Surprisingly, the stand-level WUE<sub>i</sub> was significantly higher in NT than those in the thinned stands with no significant difference between T1 and T2. The net accumulation of stand above-ground biomass was significantly higher in NT than those in T1 ( $p = 0.004$ ) and T2 ( $p = 0.001$ ), and there was no significant difference between T1 and T2 ( $p = 0.11$ ). Canopy conductances, however, were not significantly different among the three groups (all  $p > 0.1$ , except for the comparison between T1 and T2 ( $p = 0.053$ )). Therefore, the pattern of the stand-level WUE<sub>i</sub> in our study was mainly driven by the net stand above-ground biomass accumulation during the growing season. This indicates that the higher stand density in NT compensated for the decreased individual tree growth, leading to a higher net stand above-ground biomass accumulation in the unthinned stands than those in the thinned ones. Although T2 had the highest individual tree growth, the low density in T2 counterbalanced the improved individual tree growth under the thinning treatment.

Responses of WUE and WUE<sub>i</sub> to microclimate under the thinning treatments and the implications for upscaling and modelling.

The responses of WUE from leaf to stand levels to VPD in our study agree with previous research on various types of forest ecosystems in various climatic zones [58] including beech (*Fagus sylvatica* L.) [62] oak-hickory (*Quercus and Carya* spp.) [7], sugar maple (*Acer saccharum*), hemlock (*Tsuga canadensis*), yellow birch (*Betula alleghaniensis*), basswood (*Tilia americana*), and American hophornbeam (*Ostrya virginiana*) (Tang et al. [93], basket willow (*Salix viminalis* L.) [63] and the Norway spruce (*Picea abies* L. Karst) [79]. And the response of WUE<sub>i</sub> to VPD at the leaf level in our study is in accordance with the theoretical relationship described by multiple leaf-level models (Additional file 1: Table S1). Besides, our results also agree with the research reporting that tree-level WUE was primarily a function of VPD (Table 1) [10, 63, 83]. Moreover, we found that all the WUE from leaf to stand scales depended primarily on VPD (Table 1) and that no obvious changes in the responses of WUE and WUE<sub>i</sub> to microclimate between the treatments were detected at any studied spatial scale, which supports the result from Dye et al. [31] that the relationship between



WUE and VPD could be used to predict WUE in the absence of adequate background knowledge and with a limited amount of field data. However, this implication still requires further examinations with a greater sampling size and at various temporal scales, given that some minor changes in the sensitivity of WUE and WUE<sub>i</sub> to microclimates might not be fully captured in our study as Chao-Yang et al. (2018) showed that the correlations between WUE and microclimates were influenced by temporal scales and the WUE-microclimate relationships in our study were calculated based on the monthly time step alone.

The discrepancy between the leaf-level WUE and WUE<sub>i</sub> due to microclimatic factors in this study was a result of the distinct sensitivity of leaf transpiration and stomatal conductance to VPD, as leaf transpiration is regulated by both stomatal conductance and boundary layer conductance of water vapor [26], the former of which depends on the density, size and degree of opening of stomata, while the latter is determined by the air movement and leaf morphology [70]. Unlike stand-level WUE, stand-level WUE<sub>i</sub> did not significantly correlate with VPD, which is probably because that canopy conductance in our study represented the maximum water loss from the forest stand driven by the available energy. The different responses of the WUE and WUE<sub>i</sub> at the leaf and stand scales to VPD suggest that caution must be taken in selecting a proper WUE metric for upscaling from leaf to stand levels.

Last but not least, even if the thinning did not affect the sensitivity of WUE and WUE<sub>i</sub> to microclimates, the changes in microclimate resulting from the thinning could lead to the differences in WUE between the control and thinned stands (e.g., leaf-level WUE<sub>i</sub>), and consequently affect the model prediction. Clearly, microclimate is critical in evaluating the effects of thinning from the perspective of carbon and water coupling. It also plays an important role in other ecological functions of forests, such as seed germination [30, 98, 106], species diversity [29, 47], soil nutrient cycling [21, 50, 77, 110], microhabitats for insects and animal [18, 19, 76, 88] as well as wildfire [11]; Whitehead et al. [102] and mountain pine beetle attacks [2, 8]. Previous research suggested that changes in microclimate under forest management are predictable, as microclimate is closely related to vegetation structure, elevation and microtopography [5]; Frey et al., [42, 54, 67]. It is very important for forest silvicultural practices to create suitable microclimate conditions to improve forest ecological services. Our study provides the evidence of the short-term effects of thinning on WUE from leaf to stand levels. As juvenile thinning enhances crown and rooting system development and

fast growing understory vegetation [6, 11, 18, 32, 92, 96], their effects are likely dynamic, and the long-term implications of thinning require continued investigation and monitoring.

## Conclusions

Our study provided direct field evidence regarding the responses of WUE and WUE<sub>i</sub> to juvenile thinning treatments during non-drought and drought conditions at the various spatial scales. We conclude that: (1) the thinning treatments did not cause significant changes in all studied WUE metrics under a normal climate condition; (2) the thinning treatments, under the drought conditions, significantly increased tree-level and stand-level WUE, caused no changes in leaf-level WUE, while decreasing leaf-level and stand-level WUE<sub>i</sub>. Thus, WUE and WUE<sub>i</sub> responded differently to the thinning treatments and the drought effects at the same spatial level as well as across the different spatial scales, suggesting the importance of selecting metrics and scales when evaluating or modelling the effects of thinning on WUE; (3) no changes in the sensitivities of WUE to VPD under the thinning treatments at any studied spatial levels were detected, suggesting that the relationship between WUE and VPD may be used across the different spatial scales; and (4) only under the drought condition, the thinning significantly improved the tree- and stand-level WUE, indicating that thinning can promote forest resilience to the drought effects.

## Supplementary information

**Supplementary information** accompanies this paper at <https://doi.org/10.1186/s13021-020-00159-y>.

**Additional file 1:** Figures and Tables.

**Additional file 2:** Tree level, stand level, leaf level and manuscript CBM data.

## Acknowledgements

We thank Dr. Guang Qi, Dr. Xin Yang, Dr. Peng Zhang, Dr. Yingchun Liao for help in the field works, Dr. Trevor Blenner, Dr. Russell Smith and Dr. David Spittlehouse for providing forest inventory and long-term climate data, and Dr. David Scott, Dr. Tongli Wang and Krysta Giles-Hansen for valuable comments on the manuscript. We are thankful to Dr. Rita Winkler and the research team at Upper Penticton Watershed for the access to the study site and for their support toward our ecohydrological research programs.

## Authors' contributions

YW, XW and AC designed the study; YW and XW led the field data collection. YW did the data analyses; YW, XW and AC led the writing of the manuscript. All authors contributed to the drafts and gave final approval for publication. All authors read and approved the final manuscript.

## Funding

The project was funded by the Collaborative Research and Development (CRDPJ 485176-15) Grants from Natural Sciences and Engineering Research Council of Canada (NSERC). And Professor del Campo was beneficiary of

a “Salvador de Madariaga” Grant (PR2015-00635) funded by the Spanish Government.

#### Availability of data and materials

The data supporting this research are included within the article and its additional files (Additional file 2). Additional data are available upon request to corresponding author.

#### Competing interests

The authors declare that they have no competing interests.

#### Author details

<sup>1</sup> Department of Earth, Environmental and Geographic Sciences, University of British Columbia, Okanagan, 1177 Research Road, Kelowna, BC V1V 1V7, Canada. <sup>2</sup> Department of Geography and Environmental Management, University of Waterloo, 200 University Ave W, Waterloo, ON N2L 3G1, Canada. <sup>3</sup> Research Group in Forest Science and Technology (Re-ForeST), Universitat Politècnica de València, Camí de Vera s/n, E-46022 València, Spain. <sup>4</sup> The British Columbia Ministry of Forests Lands, Natural Resource Operations and Rural Development, 515 Columbia St, Kamloops, BC V2C 2T7, Canada.

Received: 8 June 2020 Accepted: 18 October 2020

Published online: 03 November 2020

#### References

- Adams MA, Buckley TN, Turnbull TL. Rainfall drives variation in rates of change in intrinsic water use efficiency of tropical forests. *Nature Commun.* 2019;10(1):3661.
- Amman GD, Logan JA. Silvicultural Control of Mountain Pine Beetle: prescriptions and the Influence of Microclimate. *Am Entomol.* 1998;44(3):166–78.
- Anderson PD, Larson DJ, Chan SS. Riparian buffer and density management influences on microclimate of young headwater forests of western Oregon. *Forest Sci.* 2007;53(2):254–69.
- Andrés EG, et al. Tree-to-tree competition in mixed European beech–Scots pine forests has different impacts on growth and water-use efficiency depending on site conditions. *J Ecol.* 2018;106(1):59–75.
- Arx G, Pannatier EG, Thimonier A, Rebetez M, Gilliam F. Microclimate in forests with varying leaf area index and soil moisture: potential implications for seedling establishment in a changing climate. *J Ecol.* 2013;101(5):1201–13.
- Aussenac G. Interactions between forest stands and microclimate: ecophysiological aspects and consequences for silviculture. *Ann For Sci.* 2000;57(3):287–301.
- Baldocchi DD, Verma SB, Anderson DE. Canopy Photosynthesis and Water-Use Efficiency in a Deciduous Forest. *J Appl Ecol.* 1987;24(1):251–60.
- Bartos, D.L. and Amman, G.D., 1989. Microclimate: an alternative to tree vigor as a basis for mountain pine beetle infestations.
- Beer, C. et al., 2009. Temporal and among-site variability of inherent water use efficiency at the ecosystem level. *Global Biogeochemical Cycles*, 23(2): n/a-n/a.
- Bierhuizen JF, Slatyer RO. Effect of atmospheric concentration of water vapour and CO<sub>2</sub> in determining transpiration-photosynthesis relationships of cotton leaves. *Agric Meteorol.* 1965;2(4):259–70.
- Bigelow S, North M. Forest Restoration in the Northern Sierra Nevada: Thinning Effects on Forest Structure. *Fuels and Shrubs: Microclimate*; 2004.
- Breda, N., Granier, A. and Aussenac, G., 1995. Effects of thinning on soil and tree water relations, transpiration and growth in an oak forest (*Quercus petraea* (Matt.) Liebl.). *Tree Physiol*, 15(5): 295–306.
- Brienen RJW, et al. Tree height strongly affects estimates of water-use efficiency responses to climate and CO<sub>2</sub> using isotopes. *Nat Commun.* 2017;8(1):288.
- Burkhardt J, Pariyar S. How does the VPD response of isohydric and anisohydric plants depend on leaf surface particles? *Plant Biol.* 2016;18:91–100.
- Cabon A, et al. Thinning increases tree growth by delaying drought-induced growth cessation in a Mediterranean evergreen oak coppice. *For Ecol Manage.* 2018;409:333–42.
- Cavender-Bares J, Sack L, Savage J. Atmospheric and soil drought reduce nocturnal conductance in live oaks. *Tree Physiol.* 2007;27(4):611–20.
- Cernusak LA, et al. Environmental and physiological determinants of carbon isotope discrimination in terrestrial plants. *New Phytol.* 2013;200(4):950–65.
- Chan, S.S., Larson, D. and Anderson, P., 2004. Microclimate patterns associated with density management and riparian buffers. An interim report on the riparian buffer component of the Density Management Studies.
- Chen J, et al. Microclimate in Forest Ecosystem and Landscape Ecology Variations in local climate can be used to monitor and compare the effects of different management regimes. *Bioscience.* 1999;49(4):288–97.
- Comstock JP, Ehleringer JR. Correlating genetic variation in carbon isotopic composition with complex climatic gradients. *Proc Natl Acad Sci.* 1992;89(16):7747.
- Concilio A, et al. Soil respiration response to prescribed burning and thinning in mixed-conifer and hardwood forests. *Can J For Res.* 2005;35(7):1581–91.
- Copenhaver PE, Tinker DB. Stand density and age affect tree-level structural and functional characteristics of young, postfire lodgepole pine in Yellowstone National Park. *For Ecol Manage.* 2014;320:138–48.
- Cutini, A. and Mascia, V., 1996. Silvicultural treatment of holm oak (*Quercus ilex* L.) coppices in Southern Sardinia: effects of thinning. *Annali Istituito Sperimentale Selvicoltura-Arezzo-Volume*, 27: 47.
- D’Alessandro CM, Saracino A, Borghetti M. Thinning affects water use efficiency of hardwood saplings naturally recruited in a *Pinus radiata* D Don plantation. *Forest Ecol Manag.* 2006;222(1):116–22.
- Danehy, R.J. and Kirpes, B.J., 2000. Relative humidity gradients across riparian areas in eastern Oregon and Washington forests.
- Defraeye T, Derome D, Verboven P, Carmeliet J, Nicolai B. Cross-scale modelling of transpiration from stomata via the leaf boundary layer. *Ann Bot.* 2014;114(4):711–23.
- del Campo AD, Fernandes TJG, Molina AJ. Hydrology-oriented (adaptive) silviculture in a semiarid pine plantation: how much can be modified the water cycle through forest management? *Eur J Forest Res.* 2014;133(5):879–94.
- Dewar RC. A simple model of light and water use evaluated for *Pinus radiata*. *Tree Physiol.* 1997;17(4):259–65.
- Dodson EK, Peterson DW, Harrod RJ. Understorey vegetation response to thinning and burning restoration treatments in dry conifer forests of the eastern Cascades, USA. *For Ecol Manage.* 2008;255(8):3130–40.
- Dunlap JM, Helms JA. First-year growth of planted Douglas-fir and white fir seedling under different shelterwood regimes in California. *For Ecol Manage.* 1983;5(4):255–68.
- Dye PJ, Jacobs S, Drew D. Verification of 3-PG growth and water-use predictions in twelve *Eucalyptus* plantation stands in Zululand South Africa. *Forest Ecol Manag.* 2004;193(1):197–218.
- Elkin C, Giugliola A, Rigling A, Bugmann H. Short- and long-term efficacy of forest thinning to mitigate drought impacts in mountain forests in the European Alps. *Ecol Appl.* 2015;25(4):1083–98.
- Escalona JM, et al. Responses of leaf night transpiration to drought stress in *Vitis vinifera* L. *Agric Water Manag.* 2013;118:50–8.
- Ewers BE, Oren R. Analyses of assumptions and errors in the calculation of stomatal conductance from sap flux measurements. *Tree Physiol.* 2000;20(9):579–89.
- Farquhar GD, Sharkey TD. Stomatal conductance and photosynthesis. *Annual review of plant physiology.* 1982;33(1):317–45.
- Fernandes, T.J.G., Del Campo, A.D., Herrera, R. and Molina, A.J., 2016. Simultaneous assessment, through sap flow and stable isotopes, of water use efficiency (WUE) in thinned pines shows improvement in growth, tree-climate sensitivity and WUE, but not in WUEi. *Forest Ecology and Management*, 361(Supplement C): 298–308.
- Fernández-de-Uña L, McDowell NG, Cañellas I, Gea-Izquierdo G, Canham C. Disentangling the effect of competition, CO<sub>2</sub> and climate on intrinsic water-use efficiency and tree growth. *J Ecol.* 2016;104(3):678–90.

38. Fick A. Ueber Diffusion. *Ann Phys.* 1855;170(1):59–86.
39. Fischer EM, Seneviratne SI, Vidale PL, Lüthi D, Schär C. Soil Moisture-Atmosphere Interactions during the 2003 European Summer Heat Wave. *J Clim.* 2007;20(20):5081–99.
40. Forrester, D.I., Collopy, J.J., Beadle, C.L., Warren, C.R. and Baker, T.G., 2012. Effect of thinning, pruning and nitrogen fertiliser application on transpiration, photosynthesis and water-use efficiency in a young Eucalyptus nitens plantation. *Forest Ecology and Management*, 266(Supplement C): 286–300.
41. Forster MA. How significant is nocturnal sap flow? *Tree Physiol.* 2014;34(7):757–65.
42. Frey, S.J.K. et al., 2016. Spatial models reveal the microclimatic buffering capacity of old-growth forests. *Science Advances*, 2(4).
43. Gao, Y. et al., 2017. Response of water use efficiency to summer drought in a boreal Scots pine forest in Finland. *Biogeosciences*.
44. Gebhardt T, Häberle K-H, Matyssek R, Schulz C, Ammer C. The more, the better? Water relations of Norway spruce stands after progressive thinning. *Agric For Meteorol.* 2014;197:235–43.
45. Gentine P, et al. Coupling between the terrestrial carbon and water cycles—a review. *Environ Res Lett.* 2019;14(8):083003.
46. Gimeno TE, et al. Conserved stomatal behaviour under elevated CO<sub>2</sub> and varying water availability in a mature woodland. *Funct Ecol.* 2016;30(5):700–9.
47. Godefroid S, Rucquoi J, Koedam N. Spatial variability of summer microclimates and plant species response along transects within clearcuts in a beech forest. *Plant Ecol.* 2006;185(1):107.
48. Goff, J.A., and S. Gratch, 1946. Low-pressure properties of water from –160 to 212°F. In: J.A. Goff (Editor), 52nd annual meeting of the American Society of Heating and Ventilating Engineers, New York, pp. 95–122.
49. Gorthi A, Volenec JJ, Welp LR. Stomatal response in soybean during drought improves leaf-scale and field-scale water use efficiencies. *Agric For Meteorol.* 2019;276–277:107629.
50. Gray AN, Spies TA, Easter MJ. Microclimatic and soil moisture responses to gap formation in coastal Douglas-fir forests. *Can J For Res.* 2002;32(2):332–43.
51. Guenther S, Moore R, Gomi T. Riparian microclimate and evaporation from a coastal headwater stream, and their response to partial-retention forest harvesting. *Agric For Meteorol.* 2012;164:1–9.
52. Guerrieri, R., Lepine, L., Asbjørnsen, H., Xiao, J. and Ollinger, S.V., 2016. Evapotranspiration and water use efficiency in relation to climate and canopy nitrogen in U.S. forests. *Journal of Geophysical Research: Biogeosciences*, 121(10): 2610–2629.
53. Gyenge J, Fernández ME, Sarasola M, Schlichter T. Stand density and drought interaction on water relations of *Nothofagus antarctica*: contribution of forest management to climate change adaptability. *Trees.* 2011;25(6):1111–20.
54. Hardwick SR, et al. The relationship between leaf area index and microclimate in tropical forest and oil palm plantation: forest disturbance drives changes in microclimate. *Agric For Meteorol.* 2015;201:187–95.
55. Harrison LP. Fundamental concepts and definitions relating to humidity. *Humidity Moisture.* 1963;3:3–70.
56. Jimenez E, et al. Effects of pre-commercial thinning on transpiration in young post-fire maritime pine stands. *Forestry.* 2008;81(4):543–57.
57. Katul GG, Ellsworth DS, Lai C-T. Modelling assimilation and intercellular CO<sub>2</sub> from measured conductance: a synthesis of approaches. *Plant, Cell Environ.* 2000;23(12):1313–28.
58. Kuglitsch F, et al. Characterisation of ecosystem water-use efficiency of European forests from eddy covariance measurements. *Biogeosci Discussions.* 2008;5(6):4481–519.
59. Lavigne MB. Stem growth and respiration of young balsam fir trees in thinned and unthinned stands. *Can J For Res.* 1988;18(5):483–9.
60. Leuning R. A critical appraisal of a combined stomatal-photosynthesis model for C<sub>3</sub> plants. *Plant, Cell Environ.* 1995;18(4):339–55.
61. Linares JC, Camarero JJ. From pattern to process: linking intrinsic water-use efficiency to drought-induced forest decline. *Glob Change Biol.* 2012;18(3):1000–15.
62. Linderson M-L, et al. Up-scaling of water use efficiency from leaf to canopy as based on leaf gas exchange relationships and the modeled in-canopy light distribution. *Agric For Meteorol.* 2012;152:201–11.
63. Lindroth A, Cienciala E. Water use efficiency of short-rotation *Salix viminalis* at leaf, tree and stand scales. *Tree Physiol.* 1996;16(1–2):257–62.
64. Litton CM, Ryan MG, Knight DH. Effects of Tree Density and Stand Age on Carbon Allocation Patterns in Postfire Lodgepole Pine. *Ecol Appl.* 2004;14(2):460–75.
65. Liu Y, et al. Water use efficiency of China's terrestrial ecosystems and responses to drought. *Sci Rep.* 2015;5:13799.
66. Lloyd J, Farquhar GD. 13C discrimination during CO<sub>2</sub> assimilation by the terrestrial biosphere. *Oecologia.* 1994;99(3):201–15.
67. Ma S, Concilio A, Oakley B, North M, Chen J. Spatial variability in microclimate in a mixed-conifer forest before and after thinning and burning treatments. *For Ecol Manage.* 2010;259(5):904–15.
68. Magruder M, Chhin S, Palik B, Bradford JB. Thinning increases climatic resilience of red pine. *Can J For Res.* 2013;43(9):878–89.
69. Martín-Benito D, Del Río M, Heinrich I, Helle G, Cañellas I. Response of climate-growth relationships and water use efficiency to thinning in a *Pinus nigra* afforestation. *For Ecol Manage.* 2010;259(5):967–75.
70. Martin TA, Hinckley TM, Meinzer FC, Sprugel DG. Boundary layer conductance, leaf temperature and transpiration of *Abies amabilis* branches. *Tree Physiol.* 1999;19(7):435–43.
71. Medlyn B, De Kauwe M. Carbon dioxide and water use in forests. *Nature.* 2013;499(7458):287–9.
72. Medlyn BE, et al. Effects of elevated [CO<sub>2</sub>] on photosynthesis in European forest species: a meta-analysis of model parameters. *Plant, Cell Environ.* 1999;22(12):1475–95.
73. Medlyn BE, et al. How do leaf and ecosystem measures of water-use efficiency compare? *New Phytol.* 2017;216(3):758–70.
74. Medrano H, Flexas J, Ribas-Carbo M, Gulias J. Measuring Water Use Efficiency in Grapevines. In: Delrot S, Medrano H, Or E, Bavaresco L, Grando S, editors. *Methodologies and Results in Grapevine Research.* Netherlands: Springer; 2010. p. 123–34.
75. Medrano H, et al. From leaf to whole-plant water use efficiency (WUE) in complex canopies: limitations of leaf WUE as a selection target. *The Crop Journal.* 2015;3(3):220–8.
76. Meyer CL, Sisk TD, Covington WW. Microclimatic Changes Induced by Ecological Restoration of Ponderosa Pine Forests in Northern Arizona. *Restor Ecol.* 2001;9(4):443–52.
77. Moghaddas JJ, York RA, Stephens SL. Initial response of conifer and California black oak seedlings following fuel reduction activities in a Sierra Nevada mixed conifer forest. *For Ecol Manage.* 2008;255(8):3141–50.
78. Monteith J, Ong C, Corlett J. Microclimatic interactions in agroforestry systems. *For Ecol Manage.* 1991;45(1–4):31–44.
79. Morén A-S, Lindroth A, Grelle A. Water-use efficiency as a means of modelling net assimilation in boreal forests. *Trees.* 2001;15(2):67–74.
80. Moreno-Gutierrez C, et al. Leaf delta18O of remaining trees is affected by thinning intensity in a semiarid pine forest. *Plant, Cell Environ.* 2011;34(6):1009–19.
81. Navarro-Cerrillo R, et al. Contrasting growth and water use efficiency after thinning in mixed *Abies pinsapo*–*Pinus pinaster*–*Pinus sylvestris* forests. *J For Sci.* 2016;62(2):53–64.
82. Norman, J.M., 1982. Simulation of microclimates. *Biometeorology in integrated pest management*: 65–99.
83. Park J, et al. Effects of thinning intensities on tree water use, growth, and resultant water use efficiency of 50-year-old *Pinus koraiensis* forest over four years. *For Ecol Manage.* 2018;408:121–8.
84. Perez-Harguindeguy N, et al. New handbook for standardised measurement of plant functional traits worldwide. *Aust J Bot.* 2013;61(3):167–234.
85. Petritsch R, Hasenauer H, Pietsch SA. Incorporating forest growth response to thinning within biome-BGC. *For Ecol Manage.* 2007;242(2–3):324–36.
86. Porté A, Huard F, Dreyfus P. Microclimate beneath pine plantation, semi-mature pine plantation and mixed broadleaved-pine forest. *Agric For Meteorol.* 2004;126(1):175–82.
87. Pretzsch, H., Uhl, E., Biber, P., Schütze, G. and Coates, K.D., 2012. Change of allometry between coarse root and shoot of Lodgepole pine (*Pinus contorta* DOUGL. ex. LOUD) along a stress gradient in the sub-boreal forest zone of British Columbia. *Scandinavian Journal of Forest Research*, 27(6): 532–544.
88. Rambo TR, North MP. Canopy microclimate response to pattern and density of thinning in a Sierra Nevada forest. *For Ecol Manage.* 2009;257(2):435–42.

89. Reid DEB, Silins U, Lieffers VJ. Sapwood hydraulic recovery following thinning in lodgepole pine. *Ann For Sci*. 2006;63(4):329–38.
90. Seibt U, Rajabi A, Griffiths H, Berry JA. Carbon isotopes and water use efficiency: sense and sensitivity. *Oecologia*. 2008;155(3):441–54.
91. Sinacore K, Asbjornsen H, Hernandez-Santana V, Hall JS. Drought differentially affects growth, transpiration, and water use efficiency of mixed and monospecific planted forests. *Forests*. 2019;10(2):153.
92. Sohn JA, et al. Mitigation of drought by thinning: short-term and long-term effects on growth and physiological performance of Norway spruce (*Picea abies*). *For Ecol Manage*. 2013;308:188–97.
93. Tang, J. et al., 2006. Sap flux-upscaled canopy transpiration, stomatal conductance, and water use efficiency in an old growth forest in the Great Lakes region of the United States. *Journal of Geophysical Research: Biogeosciences*, 111(G2): n/a-n/a.
94. Tang X, et al. How is water-use efficiency of terrestrial ecosystems distributed and changing on Earth? *Sci Rep*. 2014;4:7483.
95. Tateishi M, Xiang Y, Saito T, Otsuki K, Kasahara T. Changes in canopy transpiration of Japanese cypress and Japanese cedar plantations because of selective thinning. *Hydrol Process*. 2015;29(24):5088–97.
96. Trentini C, et al. Thinning of loblolly pine plantations in subtropical Argentina: impact on microclimate and understory vegetation. *For Ecol Manage*. 2017;384:236–47.
97. Tsamir M, et al. Stand density effects on carbon and water fluxes in a semi-arid forest, from leaf to stand-scale. *For Ecol Manage*. 2019;453:117573.
98. van Mantgem PJ, Stephenson NL, Keeley JE. Forest reproduction along a climatic gradient in the Sierra Nevada California. *Forest Ecol Manag*. 2006;225(1–3):391–9.
99. Wang JR, Simard SW, Kimmins JP. Physiological responses of paper birch to thinning in British Columbia. *For Ecol Manage*. 1995;73(1–3):177–84.
100. Wang Y, et al. Juvenile thinning can effectively mitigate the effects of drought on tree growth and water consumption in a young *Pinus contorta* stand in the interior of British Columbia Canada. *Forest Ecol Manag*. 2019;454:117667.
101. Weng S-H, et al. Microclimatic responses to different thinning intensities in a Japanese cedar plantation of northern Taiwan. *For Ecol Manage*. 2007;241(1):91–100.
102. Whitehead, R. et al., 2006. Effect of a spaced thinning in mature lodgepole pine on within-stand microclimate and fine fuel moisture content, Fuels management—How to measure success: Conference proceedings. Citeseer, pp. 523-536.
103. Wieser G, et al. Long-term trends in leaf level gas exchange mirror tree-ring derived intrinsic water-use efficiency of *Pinus cembra* at treeline during the last century. *Agric For Meteorol*. 2018;248:251–8.
104. Wong S, Dunin F. Photosynthesis and Transpiration of Trees in a Eucalypt Forest Stand:  $\text{CO}_2$  > 2 < /sub > Light and Humidity Responses. *Funct Plant Biol*. 1987;14(6):619–32.
105. Wullschlegel SD, Meinzer FC, Vertessy RA. A review of whole-plant water use studies in tree. *Tree Physiol*. 1998;18(8–9):499–512.
106. Zald HS, Gray AN, North M, Kern RA. Initial tree regeneration responses to fire and thinning treatments in a Sierra Nevada mixed-conifer forest, USA. *For Ecol Manage*. 2008;256(1–2):168–79.
107. Zhang J, Jiang H, Song X, Jin J, Zhang X. The Responses of Plant Leaf  $\text{CO}_2/\text{H}_2\text{O}$  Exchange and Water Use Efficiency to Drought: a Meta-Analysis. *Sustainability*. 2018;10(2):551.
108. Zhen Y, et al. Global gross primary productivity and water use efficiency changes under drought stress. *Environ Res Lett*. 2017;12(1):014016.
109. Zhou S, Yu B, Huang Y, Wang G. The effect of vapor pressure deficit on water use efficiency at the subdaily time scale. *Geophys Res Lett*. 2014;41(14):5005–13.
110. Zhu J-J, Tan H, Li F-Q, Chen M, Zhang J-X. Microclimate regimes following gap formation in a montane secondary forest of eastern Liaoning Province China. *J For Res*. 2007;18(3):167–73.

## Publisher's Note

Springer Nature remains neutral with regard to jurisdictional claims in published maps and institutional affiliations.

Ready to submit your research? Choose BMC and benefit from:

- fast, convenient online submission
- thorough peer review by experienced researchers in your field
- rapid publication on acceptance
- support for research data, including large and complex data types
- gold Open Access which fosters wider collaboration and increased citations
- maximum visibility for your research: over 100M website views per year

At BMC, research is always in progress.

Learn more [biomedcentral.com/submissions](https://biomedcentral.com/submissions)

